



Where the Children Sleep

Photographs by Magnus Wennman



Top: "Wala, 5. Mar Elias informal settlement, Lebanon", Magnus Wennman

Above: "Lamar, 5 years old. Horgoš, Serbia", Magnus Wennman

It can be difficult to describe a museum's role in society. We teach about the past—but look to the future. We tell the stories of extraordinary individuals—but use them to understand all humanity. And we provide a calm space—but dare visitors to question their beliefs. No matter our individual missions, museums share these challenges and one overarching goal: to provide an experience that builds a greater feeling of empathy, an experience that allows one to sense the invisible ties binding all people both past and present.

Where the Children Sleep by Swedish photographer Magnus Wennman is an immensely powerful experience. The opening of this exhibition at the American Swedish Historical Museum marks the sixth year of the war in Syria which has claimed nearly 500,000 lives, left 14 million wounded or displaced, and forced nearly five million refugees to flee the country. Wennman's

22 photographs and captions by journalist Carina Bergfeldt document this tragedy by capturing what the simple act of bedtime brings for the most vulnerable refugees—children. While traveling through seven countries in the Middle East and Europe in 2015, Wennman met refugee children who showed him where they lay their heads at night. The resulting exhibition attaches faces, names, and stories to the millions of refugee children who spend their nights in camps, fields, outside closed borders, and on the side of the road.

Although the children have escaped war, each photograph is a heartbreaking testament to the ongoing challenges faced by refugees as they seek new homes. Viewed as a whole, Wennman's photographs have the combined power to show that the Syrian Civil War is a war against humanity's most vulnerable elements.

continued on page 2

Note from the Director

A good photographer changes the way you see the world. Fred Pfaff, ASHM's longtime photographer, used to say that it should be the photographer's goal to catch the light within a person. It's about more than recording how someone looks or stopping a moment in time, a true artist is able to capture something of the person's spirit or personality.

When Swedish photographer Magnus Wennman and journalist Carina Bergfeldt set out to document the Syrian refugee crisis for the UN Refugee Agency (UNHCR) they sought a way to make the situation accessible to those of us far removed from the crisis. And so they formed the idea to document refugee children sleeping. Usually, seeing children sleeping is a moment when we can reflect on their peacefulness and innocence. But in these images, Wennman captures the reality that for some children when they are sleeping is also when they are most vulnerable.

Art in its best form will change you - that is part of the beauty of being human. I have no doubt that these photos will affect you. If you are looking for a way to make your own contribution for a better future for refugees, don't miss coming to the museum's **'How Can I Help?' Fair** on October 21st. You will have the chance to hear from Carina Bergfeldt about her experiences with this project and can speak personally with one of the many agencies working with refugees in the U.S. and to find out how you can make a difference, too.

Tracey Beck

Tracey Beck

Where the Children Sleep continued from front cover



"Farah, 2. Azraq, Jordan", Magnus Wennman

Magnus Wennman, two-time winner of the World Press Photo Award, notes, "I came up with this idea that I wanted to document where the refugee children sleep. No matter how hard this conflict may be to understand, it's not hard to understand that children need a safe place to sleep." In collaboration with Fotografiska (The Museum of Photography in Stockholm), the United Nations High Commissioner for Refugees (UNHCR) brought *Where the Children Sleep* to audiences in the United States to raise awareness about the plight of Syrian refugees.

"Children are our future. No one can see these images of children of war sleeping peacefully after being forced to flee their homes without being deeply moved," said Shelly Pitterman, UNHCR representative for the United States and the Caribbean. "They are our children."

The American Swedish Historical Museum will also host two smaller exhibits that build on themes within *Where the Children Sleep*. One, *Portraits of Migration: Sweden Beyond the Headlines*, is a series of 20 images that explore the stories of those who have found asylum in Sweden. By providing personal stories for examining Sweden's response to the refugee crisis, this exhibit helps us to understand the impacts of migration and acculturation.

Although this exhibit focuses on today's refugee crisis, it also incorporates historical patterns of migration to and from Sweden. *Portraits of Migration: Sweden Beyond the Headlines* will be installed along the balcony of the ASHM's Grand Hall.

The American Swedish Historical Museum will also host a *'better shelter'*. Designed by an enterprise partnering with the IKEA Foundation and the UNHCR, these refugee shelters offer displaced persons a secure, adaptable, and dignified place to live. Four people can build a *'better shelter'* in about four hours and, due to their lightweight materials, these shelters can be shipped worldwide. While unable to replace homes lost to war, these shelters provide refugees with amenities that improve day-to-day life such as solar-powered lamps and ventilation. The American Swedish Historical Museum's *'better shelter'* and accompanying text panels will be installed on the Museum's lawn.

The American Swedish Historical Museum will host *Where the Children Sleep*, *Portraits of Migration: Sweden Beyond the Headlines*, and a *'better shelter'* between October 21st, 2017 and March 4th, 2018. The opening of these exhibits will be accompanied by our **'How Can I Help?' Fair**, where visitors can be connected with both regional and global efforts to help migrants and refugees.



Azad: "We All Wake Up Under the Same Roof" from Portraits of Migration
Image Courtesy of Alexander Mahmoud and the Swedish Institute

How Can I Help?

A tragic regular fixture in the news has become reports on the Syrian refugee crisis. It's easy to feel overwhelmed by the staggering statistics, and these war torn regions can often feel distant and leave U.S. citizens disconnected. People may want to help but are not sure how they can make a difference, especially when not in a position to provide financial donations. At the end of the day, many find themselves saying "I feel bad, but how can I help?"

The truth is there are many ways in which the average citizen can make a difference. In conjunction with the opening of the photography exhibition *Where the Children Sleep*, the American Swedish Historical Museum is hosting a **"How Can I Help?" Fair** on Saturday October 21st from 11am - 3pm. The fair will be a day of education and cooperation to promote broader awareness of the immediate needs of refugees in our area. Refugee aid groups from the greater Philadelphia region will be on site to meet with members of the public and let them know what their organization does and how people can get involved.

ASHM invites the public to experience the refugee story through speakers who will share their personal journeys, and a walk through a portable refugee 'better shelter' designed by an enterprise partnering with the IKEA Foundation and the UNHCR. Through these activities and learning opportunities, ASHM encourages the community to come out and discover how to support refugees through volunteer work, donations of goods or services, or activism. Every effort matters so join with others to learn how you can make a difference!

Congratulations to Karin Kornaga, 2017 Amandus Johnson Volunteer Service Award



The Museum is excited to announce the recipient of this year's *Amandus Johnson Volunteer Award*, Karin Kornaga. Karin has been a longtime member and devoted volunteer at the ASHM for over 30 years.

If you have visited recently, you may have seen her captivating smile at the front desk or perhaps enjoyed hearing her sing in Swedish for the children during Toddler Time. Karin is also ever present at Midsommarfest, leading dances around the maypole, and at Lucia Fest, serving up delicious meatballs and other delicacies.

In 1962, Karin answered an advertisement in a Swedish newspaper for an au pair job in Montclair, New Jersey. She got the job and lived in Montclair for one year. Instead of returning home to Sweden, she decided that she wanted to see more of the United States.

So she moved to New York City, and soon got a job as a clerk on Wall Street. She and a friend decided that they would save up, get a car and move to California, which they did in 1966. Karin ended up in San Francisco, where she found a job in the city's famous Ferry Building. A young man whom she had met in New York followed her to San Francisco not long after she was settled; they got engaged, married and soon had two children.

Karin first came to Philadelphia when her family moved back to the East coast in 1970. They settled in Northeast Philly and she was a stay at home mom until 1978. After her husband passed away in 1983, Karin met a woman through her job who said she knew another "Swedish girl." That turned out to be Ulla Britt Apell, who got Karin to join *Midsommarklubben* in 1985. Ever since then, Karin has been a part of this group of devoted Swedish women who help organize and run two of the Museum's biggest events, *Midsommarfest* and *Julbord*. Around 2007, she took on new roles in

the Museum, mostly with our education programs. Karin says that she truly loves working with and being around children, so she enjoys working with school groups, and has been helping pronounce words and sing in Swedish for Toddler Time since the program began in 2013.

The Museum brings Karin joy, particularly by being a part of something that preserves her native culture and traditions. We are so pleased to be able to honor Karin. Her sunny demeanor and willingness to take on any task have made her one of our most indispensable volunteers in recent years. We hope that you will join us at the Annual Meeting on September 10, when we present the Amandus Johnson Volunteer Award.

Upcoming Events and Registration Info

To Register For Events

call 215-389-1776, or visit online at
www.americanswedish.org/calendar.htm

There is always something going on at the American Swedish Historical Museum. See below for scheduled events. Please check with the Museum to confirm dates and other details. Refunds will not be granted for cancellations after the registration deadline. To register for events by phone call (215) 389-1776. Online registration is available through links in the Museum's email announcements or on the Events Calendar page of our website, americanswedish.org/calendar.htm.



MONTHLY PROGRAM: Toddler Time 10:30 am - 11:30 am

The third Tuesday of each month ASHM offers specially designed programs to introduce Swedish culture through art, science, and

literature in fun and creative ways to children ages 18 months to 4 years old. The cost is \$5 per child or free for museum Household Members. There is no charge for accompanying caregivers. Register by phone or online.

Tuesday August 22: Crayfish Party!

**Tuesday September 19:
What Can You Collect?**

Tuesday October 17: What is a Sculpture?

Tuesday November 21: Swedish Stone Soup

Tuesday December 19: Tip Toe with Tomtar

**Skål! Scandinavian Sprits
Guided Exhibit Tours
1:00 pm - 2:00pm
Saturday, August 12
Saturday, September 9**

Have you ever sampled Aquavit? Whether you are new to Scandinavian spirits or an aficionado, join us for an exclusive guided tour of the Skål! Scandinavian Spirits exhibition at the American Swedish Historical Museum. Each tour will explore the history of Scandinavian spirits and the role those beverages play in the heritage of Scandinavian America. Learn how to properly Skål, or cheers, at the end of the tour with an Aquavit tasting and food pairing. Pre-registration required and tour spots are limited. \$8 members and \$18 non-members (must be 21 or over to attend tasting). Register online.



Crayfish Party Friday, August 18 6:30pm

Get a taste of Swedish summer at our annual Crayfish Party! Enjoy a buffet of crayfish

or Swedish meatballs, along with crisp bread, cheese, potatoes, cheese pie, and glass of akvavit all outside under our beautiful lighted and

decorated tent. \$50 for ASHM and SACC Philadelphia members, \$60 for non-members. Register by phone or online by August 14th.

Annual Meeting Sunday, September 10 3:00 pm

ASHM members are welcome to join us for our annual meeting, where we the Amandus Johnson Volunteer Service Award will also be presented to Karin Kornaga. This is also a great chance to see the *Skål Scandinavian Spirits* exhibition before it closes on the 17th.

Swedish Language Class Beginner Part I:



**Sundays September 17 -
November 19 (1 - 3 pm)
Conversation Part I:
Mondays September 18 -
November 20
(6:30 pm - 8:30 pm)**

Brush up on your Swedish with our language classes! Join instructors Thomas Nilsson or Carina Åhren through a ten week course on the intricacies of the Swedish language. Class registration is \$180 for members, \$245 for non-members (cost of text books not included).

Bus trip to the Finnish Embassy in Washington DC Monday, October 9th

In Celebration of Finland's Centennial, the museum is partnering with the New Sweden Alliance to offer several Finnish programs and events this Fall. Please watch your e-mail for details about the bus trip and other celebration events.

Where the Children Sleep Exhibit Opening Saturday, October 21 11am - 4pm

This series of 22 captivating photographs by acclaimed Swedish photographer, Magnus Wennman, documents the tragic consequences of the refugee crisis by capturing what the simple act of bedtime brings for the youngest and most vulnerable refugees. Each photograph comes with captions by journalist Carina Bergfeldt of how these children and their families struggle through the Middle East and Europe while making the harrowing journey out of Syria. Also opening on October 21st are two accompanying exhibits that build on the refugee theme: *Portraits of Migration: Sweden Beyond the Headlines* and 'better shelter'. All three exhibits will be on view at ASHM through March.

'How Can I Help?' Fair Saturday, October 21 11 am - 3 pm

To mark the opening of the *Where the Children Sleep* exhibition, ASHM will host an education fair to connect people with the refugee community. Speakers will share their personal experiences and

refugee aid groups from the greater Philadelphia area will be on site to let you know how you can help with this important human rights issue. This is a free event and preregistration is not required. If you have questions please call 215-389-1776 or visit our website www.americanswedish.org.

New Sweden History Conference: New Sweden Beyond the Delaware, 1638-1776 Saturday, November 4 8:30am-3pm

**Location: Lazaretto Ballroom
99 Wanamaker Ave, Essington, PA 19029**

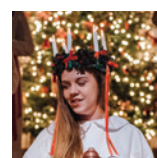
The 2017 theme will explore the migration of Swedish colonists from the original landing point of Wilmington Delaware to the greater Delaware Valley and east coast region. Speakers include Brian Crane, Sean Moir, Laurie Fitzpatrick, Catherine Dann Roeber, and Becky Griswold. Registration includes breakfast and lunch, \$60 per person (\$35 for students and teachers). Early bird \$50 registration by October 13. Registration deadline is Friday, October 30.

Lucia Rehearsals Saturday November 11 and Sunday November 19 2pm-4pm

Museum members are invited to have their children participate in our annual Lucia performance on December 1st and 2nd. They are sure to have fun dressing up as *tomtar*, *Pepparkakor*, folk dancers, star boys, and Lucia and her attendants while singing traditional Swedish Christmas songs. Attendance at both rehearsals is required. Please call or visit our website for more information.

Julbord Friday, December 1

Join us for a very special Swedish holiday tradition. Cocktails and an authentic Christmas smorgasbord dinner are followed by the Lucia procession. The Christmas Market is open all evening. Members \$50, non-members \$60. Cash bar. Register by phone or online by November 27th.



Lucia & Christmas Market Saturday, December 2 11:30 am - 4:30 pm

Drop in for our family-friendly Lucia Fest, with Lucia processions at 1pm and 3pm.

The Christmas Market includes your favorite holiday deli items, Christmas decorations, and gifts, and the SWEA bakery tables will be open all day. The Swedish Christmas Café will be selling holiday foods and sweets for your refreshment. Admission is \$12 for non-members, \$8 for members, children 4-12 \$5, and children under 4 are free. Reservations are not required, but tickets may be purchased in advance on our website.

Images from Recent Events

Photographs by ASHM Staff



▲ At our next bar meet-up in June we got to hang out, play trivia games, sing Swedish drinking songs, and drink special Aquavit Negronis at Bar Hygge in the Fairmount neighborhood of Philadelphia.

► The Liquid Alchemy Skål bar meet-up, complete with games and sparkling Lingonberry mead! On a Friday night in May we hosted a fun happy hour at this awesome meadery in Wilmington, DE.



▲ During June's art inspired Toddler Time children and their parents went on a shape safari around the Museum.

◀ At Toddler Time in May, Pippi Longstocking invited everyone to the circus!



► On June 6th we celebrated Sweden's National Day with free admission and delicious strawberry cake!

▼ Children and their parents learning more about the life of author Astrid Lindgren during a Head Start Family Day at the Museum.



▲ A Midsommar must! Traditional ring dancing around midsommarstången (the maypole).

◀ Live music performance by The Swedish Meatballs at our Midsommarfest on June 24th.



◀ In mid-June author Thomas H. Keels gave an interesting talk about the Sesqui-Centennial International Exposition of 1926 at the Museum.

Contributions

As a nonprofit organization, the American Swedish Historical Museum relies on the generosity of its friends and supporters to meet the costs providing programs and services, year-round, to thousands of local, national, and international visitors. Thank you for your contributions!

Annual Giving and Contributions

May 1 through June 30, 2017

Vasa

Sylvia E. Davenport
Erik & Nicole Muther

Gold

W. Robert & Judith A. Lang

Silver

John Holmstrom & John Polomano
Elsa Orescan
Virginia Swedberg

Bronze

Linda & Kenneth Alexy
Charlie Phillips & Teresa Winte
Ralph A. Swanson

Friends

John Baxter & Theresa McKenna
Alice Christensen
Margaret Churchville
Maria Dostmann
Joseph & Karin Hampel
Kerstin Hoeldtke
Mr. & Mrs. Donald Knutson
Timothy Nurvala & Al Wulff
Roberta Petusky
Jonathan Poole & Erin Cederlind
John & Kerstin Radel
Carl D. & Sandra D. Rapp
Vincent V. Suppan
Swedish Cultural Society of Cleveland

Gifts in Memory of Fred Pfaff

Jacqueline Axilbund
Auxiliary of the ASHM
Thomas & Laura Bahnck
William & Tracey Beck
Ragnhild & Bo Bergqvist
Elisabeth & Wayne Brown
Robert & Ingrid Cagan
Richard Carlin
Marlene Casper
Committee of 1926 of PA at
Historic Strawberry Mansion
Michael & Jill M. D'Andrea
Morris & Birgitta Davis
Donna Draper
Marna Feldt
George & Elizabeth Fish
John & Carin Foster
Elizabeth von dem Hagen
Gerald J Hansen, Jr
John Hasselberg
Ronald & Nancy Hendrickson
Kerstin Hoeldtke
Roy & Donna Johnson
Caren Jordan
Kristina & Charles Kalb
Mia Lehmann
Ruth Lindeborg & Leonard Busby
John McCann
George & Elizabeth McFarland
Ellyn Miller
Helga H Miller
Amanda Barnes Muckle
Kristina & John O'Doherty
Elsa Orescan
Thomas & Julia Patterson
Pennsylvania Trust Co.
Victoria E. & Robert A. Peterson
Kathleen & John Pitocchelli
Richard & Joanne Platt
Deborah Robinson
Hope Rosenlund
Ellen T. Rye
Matthew Scanlan II
Annette Seaberg
William & Mary Seeger
Peter & Katarina Sheronas
Kristina H. Smith
Shirley Stengel
Swedish Colonial Society
Margaretha Talerma
Fanny Warren
Gregory White
Rev. Dr. Kim-Eric Williams &
Ms. Ruth Nelson Rizzi
Birgitta Wilson

New Members

May 1 through June 30, 2017

Life Members

Sam & Janet Heed
Kristina & Charlie Kalb
Rev. Dr. Kim-Eric Williams & Ms. Ruth Nelson
Rizzi

Organizational

Ridley Township Library

Household

Ken Batt
Meera & Sam Bhardwaj-Bernhardt
Carolyn & Josh Biel-Martin
Shelby & Sean Bollner-Findley
Alyssa & Mike Crawford-Giuliano
Patrice Donnelly & Paul Bohlen
Katie & Patrick Englander-Woolford
Britt Marie Epstein
Linda Joyce & Liam Forristal
Emily & Peter Gowen-Erickson
Dana & Tim Kerr-McMahon
Margaret Nersten
Natalie & David Nowak-Manlove
Scott & Carly O'Hara-Agre
Aibing Ouyang & Happy Liu
Richard D Quodmine
Sion Shou
Terri Sorantino
Natalie & Andrew Viriglio-Salimeo
Holly Westergren

Senior/Student

Maureen Pelta

Do you want to make a contribution?

There are several easy ways to support us. Visit our web page americanswedish.org/support or call **215-389-1776** for more information.

Candidates for the Board of Governors FY2018

Carina Åhrén has worked and volunteered for ASHM since 2010. She had a part-time grant-funded position as marketing/membership assistant in 2010-11. Since 2014 she teaches the museum's Swedish language classes, and she works as the buyer for the museum gift shop. She teaches Swedish and has directed the Swedish language program at UPenn since August 2016. As a native Swede, who has spent about two thirds of her life in Sweden and a third in Pennsylvania, Carina is interested in strengthening Swedish-American connections locally and internationally. Carina studied communication and art at Slippery Rock University, and behavioral science and project coordination at Gothenburg University. She lives in Havertown with her husband and two teenage children. (1st term)

William Eaton was raised in West Chester, PA and represented that town's Rotary Club as an exchange student in Finland. While at Colgate University, he spent a semester at Oulu University in northern Finland. After college, he received a Fulbright Fellowship to research international trade at Helsinki University, and Helsinki Business School. Returning to the US, he earned Masters' degrees in International Relations from Johns Hopkins, SAIS, and Business Administration from Wharton. He began his independent consulting career in Washington, DC with different focal points over time. Eaton serves on the board of the Finnish American Society of the Delaware Valley, handling Cultural and Public Affairs. (1st term)

Fredrik Khayati resides in Voorhees, New Jersey with his wife and two children. Since June 2016, Fredrik has been employed by the New Jersey Department of Environmental Protection where he is an Environmental Specialist in the Division of Solid and Hazardous Waste. In May 2014, he received a Master's Degree in Environmental Science from Richard Stockton University of New Jersey. He also has a Bachelor's Degree in Business Administration from Gävle Högskola and is a Certified Beer Judge in the Beer Judge Certification Program. Originally from Stockholm, Sweden, Fredrik has been residing in the United States since May 2006 when he arrived to take up an internship with American-Swedish Chamber of Commerce in Philadelphia. (2nd term)

A. Monica Kruse is a Human Resources professional with 28 years of experience in HR and management consulting. She has held various roles in HR and consulting with Pfizer, Wyeth, IBM, and PwC. Monica currently lives in Swarthmore, PA, with her husband and two

daughters. As a youth, she spent many years living in Stockholm, where she still has very close family. Monica is very involved in her community, and serves on several local non-profit boards. Monica has a great passion for the American Swedish Historical Museum. She directed the Lucia program for several years, and her father served on the ASHM Board of Governors. She very much looks forward to continuing her support for the museum. (1st term)

Sigrid E. Neilson is an Assistant General Counsel at Equinox Holdings, Inc., a luxury fitness company headquartered in New York City, and oversees her company's intellectual property portfolio, handles advertising and marketing law issues and negotiates commercial contracts. Ms. Neilson earned a B.S., with highest honors, in Science, Technology and Culture from the Georgia Institute of Technology and a law degree from Vanderbilt University Law School. A native of the Philadelphia area, Ms. Neilson has fond memories of attending ASHM's Lucia Fest as a child. Her family's appreciation of the museum stretches back to several generations to her great-grandfather, Hjalmer Lundquist, who became an active member after emigrating from Sweden in the early 20th century. Ms. Neilson is of both Swedish and Danish descent, and has enjoyed learning about Swedish culture and history, as well as a bit of the Swedish language, during several visits to Stockholm. (2nd term)

Thomas Nilsson grew up in Skillingaryd, Sweden. Before he attended university he tried out a number of occupations ranging from working with jet molding plastic, sausage factory worker, liquor store associate, bartender and medic in the army. Later, he graduated from the University of Jönköping and Penn State University, with degrees in elementary and after school education. After graduating in 2012, he started his teaching career and quickly found his way into the school district's new professional development group. In June of 2016 he arrived in the United States with his wife Melissa and their daughter Tova. He then worked with the after-school company Bricks for Kidz, and is currently working as a teacher at the Swedish school in Devon and will be teaching one of the Museum's Swedish language classes this fall. In January of 2017, he started as a volunteer tour guide for the Skål exhibit at the ASHM. (1st term)

Sandra Springer Pfaff has devoted much of her life supporting causes close to her heart. She is a descendant of early Swedish settlers and has provided countless hours advancing the cause of Swedish history and culture in Philadelphia

and the Delaware Valley. Sandra has been involved with the American Swedish Historical Museum since childhood. She was formerly Chair and is currently Vice Chair of its Board of Governors. Sandra has helped guide several events and fundraisers for the Museum. Sandra is Chair of the Swedish Council of America Foundation and is the first recipient of the Swedish Council of America's Founder's Award. For more than 45 years, she worked as an elementary school teacher and has taught basic economics involving the stock market to student teachers. (2nd term)

James R. Roebuck, Jr., Senior member, House of Representatives. Representative Roebuck has a BA in History with honors from Virginia Union University and an MA and PhD from the University of Virginia. He is Chairman of the House Education Committee and serves on the board of the Pennsylvania Higher Education Assistance Agency. He has served as chair of the Pennsylvania Legislative Black Caucus and on the Executive Committee of the National Black Caucus of State Legislators. Before being elected in 1985 to represent Philadelphia's 188th Legislative District, he was on the faculty of Drexel University and was Legislative Assistant to the Mayor of Philadelphia. He has served on the board of many civic organizations, including Annenberg Center, Boy Scouts of America, Child Crisis Treatment Center, Community College of Philadelphia, NAACP, Garden Court and Spruce Hill Community Associations, as well as his school, college and graduate alumni associations. (1st term)

James S. Walker is a retired Senior Executive of PNC Bank. Jim was the General Manager of PNC's ATM Group, which had over 8500 ATM's when he retired in 2013. Jim has been active at the Philadelphia Cricket Club over the past 25 years. His leadership positions included 8 years as Treasurer and 2 years as President. Presently Jim is a volunteer on the structures crew to keep the Wissahickon Park (FOW) in good condition. He also serves as Treasurer and head of the Budget and finance Committee of FOW. Mr. Walker is a native Philadelphian who currently resides in Flourtown, PA with his wife Sophia. They have three children and six grandchildren. He is a graduate of Germantown Friends School and Bucknell University. Jim is currently on the Board of ASHM and serves as Treasurer. In addition he is on the Finance and the Building and Grounds Committees. (2nd term)

17th Annual New Sweden History Conference

New Sweden Beyond the Delaware,
1638-1776
November 4, 2017
8:30am-3pm

This year the New Sweden History Conference heads back to the Lazaretto Ballroom in Essington PA. The 2017 theme will explore the migration of Swedish colonists from the original landing point of Wilmington, Delaware to the greater Delaware Valley and east coast region. Through material culture and the science of DNA, speakers will examine how members of the New Sweden Colony and subsequent generations were able to maintain their sense of culture and community while assimilating into the shifting political power structures around them. Evidence of cultural preservation will be traced through language records, personal case studies, use of mapping



View from Bushongo Tavern 5 miles from York Town on the Baltimore road.
1788, Engraving, The New York Public Library
The Miriam and Ira D. Wallach Division of Art, Prints and Photographs: Print Collection

systems to locate Swedish settlements, and how DNA evidence supports records of Swedish diaspora from the original colony.

Speakers on this topic include Brian Crane, Sean Moir, Laurie Fitzpatrick, Catherine Dann Roeber, and Becky Griswold. Be sure to join us for a fascinating day of history while enjoying the beautiful surroundings

of the Lazaretto Ballroom. Registration includes the conference, breakfast, and lunch: \$60 per person (\$35 for students and teachers). Early bird \$50 registration ends October 13. Registration deadline is Friday, October 30.

For more information and to register, please visit www.americanswedish.org or call 215-389-1776.