



“It was very rare for Nordic Women to walk the rose-colored path [to greatness] ...”

-Dr. Hanna Rydh, Women in the Ancient North, 1926

From the Women of Sweden

This article is an introduction to a politician, international women’s rights activist, Sweden’s first female archaeologist, and a great friend of the American Swedish Historical Museum. Dr. Hanna Rydh organized one of the museum’s most extensive collections—a gift of 75 textiles and other hand-crafted materials made by women in every Swedish province. Through this gift, Dr. Rydh won a place of international honor for Nordic craftswomen.

In celebration of the collection’s 80th birthday, ASHM’s fall exhibit presents the life and material legacy of Dr. Hanna Rydh through the gift presented in 1938. Of course, the objects are marvels in their own right—all celebrating the identities of Swedish provinces. But even more than highlighting regional craft, these goods are activist objects emphasizing the role of craftswomen through history and their new found equality with men in Sweden and America.

Hanna Rydh (1891 – 1964), born to a wealthy Stockholm family and educated at Uppsala, entered archaeology and politics just as modern women’s rights were established in Sweden. Only three years after Rydh earned her doctorate in 1919, Swedish women gained the right to vote, husbands’ guardianship over wives ended, and women won access to all professions. Rydh had already proven herself by directing prehistoric and Viking-age excavations across Sweden, but breaking into a male-dominated profession would have been impossible without such changes.

“My son’s birth makes no difference!”

-Dr. Hanna Rydh, 1931

Although doors to thousands of new careers opened just as Rydh finished her doctorate in archaeology, Swedish women still faced many challenges. For example, an English scholarship hesitated to fund Rydh’s projects after learning that she had given birth to a son. Rydh’s response gained global attention: “My son’s birth makes no difference!”



“An Anglo-Bolshevik and Feminist”

-Svea Rike, 1943

Despite leading excavations in Sweden and India throughout her life, Rydh did not seek employment as an archaeologist. Rather, she directed her energies between the 1930s and 1950s into politics and international organizations. These efforts resulted in Rydh’s tenure as chairperson of the Fredrika Bremer Association between

Note from the Director

What is the best gift you have ever received? One of my favorites is a quilt that my mother made for me and my husband. The three of us selected the colors, the fabrics, and the pattern together. My aunts, who are more experienced quilters than my mother, gave her design ideas and technique strategies. The resulting quilt is not likely to ever hang on a museum wall as an example of artistic achievement or remarkable sewing. And yet, it might be one of the most significant objects representing my relationship with my mom.

When my mother gave us the quilt and we put it on our bed, sleeping with it every night for years, I remember how enveloped by love we felt. My mom had talked to me about the quilt as she was making it, and told me how much she truly enjoyed working on this project vs. others she had done. I love just sitting on the bed looking at each fabric we selected together, all of which have leaves and flowers on them as a tribute to the affinity for nature my husband and I share. It reminds me of my mom and how she inspired in me a love for keeping my hands busy. For making handmade gifts. For exploring new arts and crafts.

Gifts like my quilt have always had these kinds of meanings and memories, but they are rarely kept with the object as it changes hands over time. And so it can take a little digging to find them. The museum received a monumental gift of textiles from the women of Sweden in 1938. I had no idea of the layers of meaning in this gift until our curator went digging into the records in Sweden from the time of the gift. I hope that our current exhibition inspires you to think about the millions of women whose stories are rarely captured in writing, but whose influence over time is immeasurable.

Tracey Beck

Tracey Beck

From the Women of Sweden continued from front cover

1937 and 1949, member of parliament in 1943 and 1944, and—perhaps most famously—president of the International Women’s Alliance from 1946 to 1952.

Dr. Rydh’s international efforts only became more pronounced during the Second World War. In addition to directing humanitarian projects such as re-housing Finnish refugee children in Sweden, Rydh also acted as a diplomat by maintaining ties with Axis-based women’s organizations. Although Sweden remained neutral, Rydh’s activities were firmly anti-Nazi. Rydh frequented the secret “Tuesday Meetings” that readied armed resistance to German occupation. Her activities did not go unnoticed. A Stockholm-based publisher sympathetic to the Third Reich—*Svea Rike*—included Rydh’s name in a black-book called *Who is Who on the Popular Front: The Leading Anglo-Russian Propagandists in Sweden*. Rydh’s anti-authoritarian activism warranted her branding as “an Anglo-Bolshevik and Feminist”.

“Her blue-gray eyes fairly snapped as she described the revival of interest in handiwork.”

-The Philadelphia Record, June 22nd, 1938

Clear from Hanna Rydh’s life are her passions for both archaeology and politics.

It would be easy to think that these were fascinating but ultimately unrelated pursuits. And, in many ways, they were. The 1930s were the golden age of archaeology – think of Sir Arthur Evans’ digs in Greece, Agatha Christie’s work in Iraq, and, yes, Indiana Jones’ fictional hunt for biblical treasures. Such celebrity-scholars had little need for politics. But Hanna Rydh blended her careers in a unique way that soon led to friendship with ASHM.

This underlying theme was the meaning of handicrafts for ancient and modern Nordic women. Rydh’s scholarship—particularly her excavations of prehistoric and Viking-age graves—focused on traditionally-female artifacts such as jewelry, clothing, cookware, and other domestic goods. Rydh argued that as women had always demonstrated superiority in these crafts, they had taken on active roles in their livelihood and thus had never been inferior. Today we might disagree with Rydh’s beliefs—after all, her success in archaeology showed that there are no uniquely gendered livelihoods or crafts. But Rydh knew that knowledge was the key to helping Nordic women realize their

potential. Her work thus highlighted the capability of Nordic craftswomen as new career paths and civic rights opened to them.

To give visibility to these beliefs, Rydh used her political contacts to organize international gifts. As early as the 1920s, Rydh assembled these gifts “from the women of Sweden” for bazaars in London. While less extensive than the later gift to ASHM, Rydh’s work in England laid the foundations for her craft and feminist diplomacy.





The 1938 Swedish-American Tercentenary provided the perfect venue to further highlight Swedish craftswomen. The timing was ideal—Scandinavian modern designs were wildly popular around the world. Both Swedish and American newspapers record that Philadelphians were ecstatic to buy Swedish goods in department stores such as Strawbridge's. But the real show was at the American Swedish Historical Museum, where the Women's Auxiliary coordinated with Rydh to exhibit these crafts from the women of Sweden. Such treasures included a coverlet from Ångermanland modeled on

a royal gift, a Flemish-weave tapestry from Malmö parading birds, flowers, and deer, and a massive rug from Upland modeled on a 1700s tapestry. And from Dr. Rydh's own province of Jämtland, beautiful dolls dressed in the local folk costume that Rydh herself had designed.

Explore Dr. Hanna Rydh's life and material legacy through a selection of gifts to the American Swedish Historical Museum in the exhibit: "From the Heart, Made by Hand" on view between September 16th, 2018 and March 10th, 2019!

This exhibition is supported by grants from the ASHM Auxiliary, Barbro Osher Pro Suecia Foundation, George C. and Esther Ann McFarland Foundation, Midsommarklubben, Swedish Council of America, and an anonymous foundation. Support also provided by the Philadelphia Cultural Fund.

Congratulations to Kristina O'Doherty: 2018 Amandus Johnson Volunteer Award Recipient



About 15 years ago, Kristina Johnson O'Doherty was in the process of cleaning out her parents' house when she came across a document that would make a significant impact on her life: her paternal grandfather's certificate of citizenship for the United States. He had emigrated from Sweden as a young man, as did her paternal grandmother. Growing up, Kristina didn't know much about her Swedish heritage aside from her Grandma Johnson's and her father's pea soup. But once she found her grandfather's citizenship document, it sparked her curiosity.

Kristina first came to the museum to begin her genealogy research. With the help of the Genealogy Club, and LaVonne Johnson in particular, she made great strides in tracking down her grandparents' origins in southern Sweden. In 2012, she even made a trip to visit her family's ancestral farmstead and to meet her relatives.

Since joining the museum, Kristina has become involved in practically every aspect of volunteering. She took on a leadership role in the Genealogy Club, and is currently serving as its president and still handles many of the genealogy inquiries that the museum receives. She also joined the Auxiliary, where she served for a time as treasurer; she has been very involved with the Spring Ting committee for the last decade, serving for a time as Committee Chair, as well as taking charge of the auction. Kristina is on the Board of Governors, currently serving as Development Chair and a member of the Strategic Planning committee. She can also be found volunteering at any number of the museum's events throughout the year.

When asked what was the most satisfying part of her involvement at the museum, Kristina answers without hesitation—her gratitude for reconnecting with her family's roots. One of her first events at the museum was the Pea Soup Supper, which reminded her not only of her father's cooking, but also of him as a person. She recognized his manner and humor in some of her fellow Swedish-Americans. And beyond her familial connection, Kristina has discovered one of the greatest benefits of volunteering at an organization—forging great friendships and finding a place within our museum community.

We hope that you will join us in celebrating Kristina and all that she has contributed to the ASHM at our annual meeting, Sunday, September 16th, when she will be awarded the Amandus Johnson Volunteer Award

Upcoming Events and Registration Info

To Register For Events

call 215-389-1776, or visit online at
www.americanswedish.org/calendar.htm

There is always something going on at the American Swedish Historical Museum. See below for scheduled events. Please check with the Museum to confirm dates and other details. Refunds will not be granted for cancellations after the registration deadline. To register for events by phone call (215) 389-1776. Online registration is available through links in the museum's email announcements or on the Events Calendar page of our website: americanswedish.org/events.

MONTHLY PROGRAMS:



Toddler Time 10:30 am - 11:30 am

The third Tuesday of each month ASHM offers specially designed programs to introduce Swedish culture through art, science, and

literature in fun and creative ways to children ages 18 months to 4 years old. The cost is \$5 per child or free for museum Household Members. There is no charge for accompanying caregivers. Register by phone or online.

Tuesday August 21: Summer in Sweden

Tuesday September 18: Harvest Fest!

Tuesday October 16: Swedish Music

Tuesday November 20: Friendship Fabrics

Tuesday December 18: Swedish Christmas Traditions



Crayfish Party Friday, August 17 6:30pm

Get a taste of Swedish summer at our annual Crayfish Party! Enjoy a buffet of crayfish and Swedish meatballs, along with crispbread, cheese, potatoes, cheese pie, and glass of akvavit all outside under our beautiful lighted and decorated tent. \$50 for ASHM and SACC Philadelphia members, \$60 for non-members. Register by phone or online by August 14th.

Ingmar Bergman: His Legacy in Fashion and Art Opens Saturday, August 24

Ingmar Bergman (1918-2007) – renowned Swedish director, scriptwriter, theater manager, dramatist, and author – would have been 100 years old in July 2018. To honor this accomplished filmmaker, ASHM is celebrating Bergman's anniversary with an exhibit and film-clip series on its Balcony.

Annual Meeting Sunday, September 16 3pm

ASHM members are welcome to join us for our annual meeting, at which the Amandus Johnson Volunteer Service Award will be presented to Kristina O'Doherty.

From the Heart, Made by Hand: Treasures from the Women of Sweden Exhibit Opening Sunday, September 16 4pm-5:30pm

This exhibition includes selections of the 75 handmade textiles presented to the American Swedish Historical Museum in 1938 from every province of Sweden. Free with museum admission.

Fiber Installations by Ted Hallman, PhD Sunday, September 16 4pm-5:30pm

The hand speaks and craft communicates from the heart. Fiber sculptor Ted Hallman examines the relationship between traditional and modern craft through three contemporary installations on ASHM's first floor.



Swedish Language Class **Beginner Part I: Mondays** September 17-November 19 (6:30-8:30pm) **Conversation: Mondays** September 17-November 19 (6:30pm-8:30pm)

Brush up on your Swedish with our language classes! Join instructors through a ten week course on the intricacies of the Swedish language. Beginners Part I is for new learners and Conversation is designed for students with prior experience with the language. Class subscription is \$180 for members, \$245 for non-members (cost of text books not included).

Guided Tour Saturday, October 20 12:30-2pm

Do you want to see the American Swedish Historical Museum in a new way? Join us for a guided tour of the Museum! Don't miss this opportunity to get an in-depth look at the gallery spaces with Museum Curator Trevor Brandt. Spaces on the tour are limited and pre-registration is recommended. \$5 member, \$15 non-member.

Genealogy Meeting and Author Talk Saturday November 3rd 1pm-3pm

Gather with fellow ASHM members and explore the branches of your Swedish ancestry. The meeting will include a lecture by *Across the Brooklyn Bridge* author John Lundin. In his talk, John will discuss the challenges of researching and writing a multi-generational epic that gives historical context to his family's story and takes the reader on a journey from Sweden to America to the Pacific in World War II. John will also share his experiences in Sweden, especially his serendipitous visits to his grandfather's hometown where he began his quest to trace his ancestors' lives on land and on the sea.

New Sweden History Conference: Sojourning Strangers: Swedes and Germans in the Middle-Atlantic Colonies Saturday, November 10th 8:30am-3pm

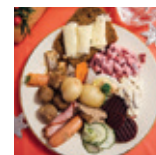
Location: German Society of Pennsylvania, 611 Spring Garden St, Philadelphia, PA 19123
Although divided by language and congregations, Swedes and Germans were both ethnic minorities within the predominantly English-speaking colonies of Delaware, Maryland, New Jersey, New York, and Pennsylvania. Speakers this year include Dr. Linda Rugg, professor of Scandinavian Literature at Berkeley University; Dr. A. Gregg Roeber, professor emeritus of early modern history at Penn State; Lisa Minardi, PhD candidate in American Civilization at the University of Delaware; and Rev. Dr. Kim-Eric Williams, curator and archivist at the Mr. Airy Lutheran Seminary Archives. Registration for the conference includes breakfast and lunch: \$60 per person (\$35 for students and teachers). Early bird \$50 registration is offered through October 12th. Registration deadline is Friday, November 2nd.



Lucia Rehearsals Saturday November 10th and Sunday November 18th 2pm-4pm

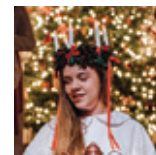
Museum members are invited to have their children participate in

our annual Lucia performance on December 1st and 2nd. They are sure to have fun dressing up as tomtar, Pepparkakor, folk dancers, star boys, and Lucia and her attendants while singing traditional Swedish Christmas songs. Attendance at both rehearsals is required. Please call or visit our website for more information.



Julbord Friday, November 30th 6pm

Join us for a very special Swedish holiday tradition. Cocktails and an authentic Christmas smorgasbord dinner are followed by the Lucia procession. The Christmas Market is open all evening. Members \$50, non-members \$60. Cash bar. Register by phone or online by November 26th.



Lucia & Christmas Market Saturday, December 1st 11:30am-4:30pm

Drop in for our family-friendly Lucia Fest, with Lucia processions at 1pm and 3:15pm. The

Christmas Market includes your favorite holiday deli items, Christmas decorations, and gifts, and the SWEA bakery tables will be open all day. The Swedish Christmas Café will be selling holiday foods and sweets for your refreshment. Admission is \$12 for non-members, \$8 for members, children 4-12 \$5, and children under 4 are free. Reservations are not required, but tickets may be purchased in advance on our website.

Images from Recent Events

Photographs by ASHM Staff



▲ How does a real reindeer antler feel? From the Sami Exploration toddler time in May.

▶ Story-time for all the toddlers in the New Sweden room!



▼ A game of soccer in the Josef Frank gallery to finish off a day of fun at the World Cup-themed toddler time in June.



◀ Volunteers making wreaths during this year's Midsommarfest.

▼ Next generation ASHM midsummer participants.



▶ ASHM's Education Manager Lauren with a classic Swedish strawberry cake at the museum's Swedish National Day celebrations on June 6th.



▼ As the Swedish soccer team progressed through the World Cup, fans of all ages gathered in the Josef Frank gallery to watch the live streamed games on our big screen projector.



▲ Sweden beats Switzerland 1-0 during our third World Cup Watch Party.



◀ As usual, one of the highlights of the Midsummer celebrations was the dancing around the maypole, which included classics such as Små Grodorna and more modern twists such as Raketen (in the photo).

Nominees for the ASHM Board of Governors, Class of 2021

Per Blomquist was born and raised in Umeå, Sweden where he spent most of his childhood. He received his master's degree in Industrial Engineering and Management from Linköping Institute of Technology and started working at Industri-Matematik International (IMI) in Stockholm, Sweden. After working there for two years, he transferred over to their growing North American Operations in 1999. In 2007, he left IMI and started working in a presales role at SAP America, Per is still at SAP where he is now the Director of Solution Engineering for SAP Customer Experience in the North-East. Per is married to Angela Blomquist and they live with their two kids Annika and Patrik in Swedesboro, NJ. Per and his family have been members at the museum for 15 years and regularly participate in the Lucia Pageant, Midsummer celebrations, Language classes etc. Per was also one of the volunteer guides for the Skål exhibition and is now looking to take his involvement at the museum to the next level.

Sophia Bonde is *halv-Svensk*-her father is Swedish, her mother American- and has spent most of her life between Washington, D.C. and Stockholm. She started her career at National Museum of Natural History interning in development with the Smithsonian where she found her love for non-profits. She is currently Executive Director at Argot Magazine, a non-profit publication dedicated to intersection of queer culture and the marginalized experience. Sophia is very active in her community in DC, where she volunteers with many local organizations such as Reading Partners and Collective Action for Safe Spaces. Sophia currently travels to Sweden about three times a year to spend time with her family

John Holmström has been a resident of Philadelphia for over 20 years, working in Hotel Management in various hotels in the Greater Philadelphia area. John grew up in Österskär outside of Stockholm before coming to the US to attend college. John attended Cornell University, where he obtained a BS degree in Hotel Administration. Since then John has worked in Hotel Operations around the US, Singapore, Hong Kong and Thailand. John currently resides in Queen Village. John enjoys spending time on the beach in Sea Isle City, and takes advantage of the cultural offerings of

Philadelphia together with his husband John. In addition, they are both avid Phillies Fans. They also enjoy travelling, especially to Sweden where they visit John's family in Täby, Skellefteå, Stockholm and Uddevalla. John has been a member of the ASHM since he moved to the area and attends as many events as possible together with his husband, friends, and family.

Julie Jurash has held various positions supporting key executives in the arts, higher-education and investment management industries in Philadelphia, Boston and Chicago, including the Philadelphia Museum of Art, The Glenmede Trust Company and The Barnes Foundation. She is a graduate of the University of Delaware and has been affiliated with the museum since the 1980s. In addition to acting as Secretary to the ASHM Board of Governors, Julie was an Aquavit Ambassador during the museum's 2017 Skål! Scandinavian Spirits exhibition. Her great-grandfather, O. J. Johnson, was present at the dedication of ASHM in the 1930s. She is proud of her Swedish heritage and has had many wonderful experiences taking part in museum events including Swedish cooking classes and a visit to the Swedish Embassy at the House of Sweden in Washington, D. C. Julie and her husband Stephen, who celebrated their wedding at the museum, reside in Ambler, PA, where she is active in the Weavers Way Cooperative Association. This will be Julie's second term on the board.

Kristina Mattila, Esq, MBA is a dual citizen of Finland and the USA. For the past 10 years she has served Finland as honorary consul of Philadelphia and Pennsylvania. Her background is in the international legal and business fields. For fifteen years, she has provided consultation in legal and business transactions in Finland, several European countries, Russia and in the USA. She also has seven years of experience in China including language studies, several trips to areas in China, access to Chinese business culture while working in the fields of financial, legal, shopping centers and green technology. While working as a PhD student at the University of Technology, Helsinki (currently Aalto University) Kristina initiated a new type of contractual system in project management and intellectual property areas. Her current focus is abstract painting studies at Pennsylvania Academics of the Fine Arts.

John P. McCann, Jr. lives in Upper Darby, PA. John is a graduate of St. Joseph's University, with a major in Labor Studies. He also studied fire, with focus on oil refinery and petrochemical firefighting at Texas A&M University and University of Nevada-Reno. He attended the MIT/Harvard University Public Disputes Program, which focuses on dealing with an angry public and dispute resolution training. John served as Manager of Public Affairs at the Refinery of Sunoco, Inc. (R&M) Philadelphia from 1985 until his retirement in the spring of 2009. He managed and directed community and media relations, as well as specific local government relations, plus internal and external communications programs. He is married and has two children. He has served on several boards in the Philadelphia area, including ASHM and Historic Bartram's Garden.

Erik Muther is Vice President at Discern Health, a boutique healthcare consulting company based in Baltimore. Erik joined Discern Health from the Pennsylvania Health Care Quality Alliance (PHCQA), where he served as the managing director. Erik was the founding executive director of PHCQA before it merged with Health Care Improvement Foundation (HCIF) in 2015. He has over 23 years of health care experience, leading a wide range of quality measurement, process improvement, and strategy development programs. He specializes in managing multi-stakeholder initiatives to align health care metrics, incentives, outcomes and payment methodologies. Prior to his work at HCIF and PHCQA, Erik spent 12 years in the health care practice of Accenture, a large global consulting company. Erik is currently the chair of the Board of Governors of the American Swedish Historical Museum (ASHM). He has served on the Board of ASHM since 2001 and has been chair of the finance committee for most of that time. He is also currently treasurer and Board member of Lansdowne Friends School in Delaware County as well as treasurer of the Friends Equity Educational Collaborative based in Philadelphia. Erik previously served on the Alumni Association Executive Committee of Haverford College from 2005 to 2011. Erik is a dual citizen of the US and Sweden and attended high school at Sigtunaskolan Humanistiska Läroverket in the Stockholm area for his last two years. Erik has a bachelor's degree in psychology with a concentration in neural and behavioral sciences from Haverford College. Erik lives in Media, PA with his wife and two sons.

Contributions

Kristina Johnson O'Doherty is a retired Special Agent of the FBI. Kristina was assigned to Philadelphia and also served as a Supervisory Special Agent in Albany, NY and at FBI Headquarters in Washington, DC. Following her retirement, Kristina became a member of the American Swedish Historical Museum in hopes of discovering more about her Swedish roots. Kristina is an active member of the Swedish Genealogy Club and currently serves as its President. As an amateur genealogist, Kristina helps visitors to the museum with their Swedish genealogy research. She is also a member of the ASHM Auxiliary, the ASHM Board of Governors and the Spring Ting Committee. In addition to her volunteer activities at the ASHM, Kristina is an active member of the Emergency Aid of PA Foundation in Radnor, PA and serves as its Co-Chairman. Kristina and her husband, John, live in Blue Bell, PA.

Fanny Warren graduated from Tufts University with a BA in history and economics. Immediately after college she worked for Wedgwood China as well as the Xerox Corporation and Conde Nast. After taking a hiatus to raise her three children during which time she lived in 5 states, she worked for 25 years as a sales rep for Amscan, a party goods company. Her heritage is Scandinavian as she has a Norwegian grandfather, 3 Swedish grandparents and her father was born in Sweden but grew up and was educated in Denmark. Her interest in the American Swedish Historical Museum began with the genealogy club as she researched her family's history. She has been active in the Auxiliary, has helped with the museum shop and is on the Spring Ting committee, which she chaired for 5 years. She also volunteers at The Women's Exchange a West Chester consignment shop and several committees at her residence at Hershey's Mill. She is looking forward to continue helping the museum by serving on the Board of Directors.

As a nonprofit organization, the American Swedish Historical Museum relies on the generosity of its friends and supporters to meet the costs providing programs and services, year-round, to thousands of local, national, and international visitors. Thank you for your contributions!

New Members

May 1-June 30, 2018

Household

Ted Dahlburg
Jamal & Neda Derakhshan-Parvin
Domenica DiMeo
Lance & Helen Ericson
Patrik & Maya Hueman
Michael & Erika McElveen-Robbins
Julie & Kevin McWilliams-Dowd
Megan Brown-Olsen & Kai Olsen
Tiller Family
Pennington Winberg
Hillary & Greg Wool-Whitten

Individual

Katie Callam
Tracey Smith
Sharon Wilhelm

Senior/Student

Denise Costello
Joan Francis
Margaret Testa

Summer

Priya DasGupta & James Jesson
Lorenzo Gonzalez
Deborah Hodge
Brett John & Rob Florig

In Memoriam

The ASHM lost a very special member in the last few months. We send our deepest condolences to his friends and family.

Gene McCoy

Contributions

May 1-July 15, 2018

Vasa

Kristina & John Antoniadis
Ragnhild & Bo Bergqvist
Gordon & Jane Downing
W. Robert & Judith A. Lang
Dr. & Mrs. Mark Martz
Dr. & Mrs. V. Eugene McCoy
Kristina & John O'Doherty
The PEW Charitable Trusts Employee Matching Gifts

Gold

Eleanor Poe Barlow, in honor of Kristina Kalb
Margaret Copeland
Ulla Dagert-Muther & Paul Muther
Kristina & Charles Kalb
Sigrid Elsa Neilson
Roberta Petusky
Earl & Sylvia Seppala
Margaretha Talerman
Fanny Warren

Silver

Ingrid M Berry
Jimmy & Helena Collins
Christina Hagman
John Holmstrom & John Polomano
Duane Malm
Carl D. & Sandra D. Rapp

Bronze

William & Tracey Beck
Jacqueline Axilbund
Görel Bengtzon & Roman Hrycushko
Morris & Birgitta Davis
Dr. & Mrs. Paul Engstrom
Thomas F. & Mary Ann Hudson
Kathi Keefe
Catherine & Fredrik Khayati
Doris Lehman
Ruth Lindeborg & Leonard Busby
Katherine Monday-Schievenin
Erik & Nicole Muther
Timothy Nurvala & Al Wulff
Sandra Pfaff
Pfizer Foundation Matching Gifts Program
Richard & Joanne Platt
Faith Sandstrom
William & Mary Seeger
Kristina H. Smith
Shirley Stengel
Theresa Stuhlman
Kim-Eric Williams & Ruth Nelson Rizzi
Eunice Winters

Friends

Len & Flo Beck
Alice Christensen
Keith & Hilma Cooper
Nancy & Richard Cox
Genevieve Haines
Elisabeth Hohman
Sylvia Holteen
C.R. Karlsson
Mr. & Mrs. Donald Knutson
Ulla-Britta & Jerry McCarthy
Mary Anne Carlson Morgan
Donna Ellen Norling O'Connell
Maud Palmer
Carolyn Peterson
Mary Anne Powell
John & Kerstin Radel
Linda T. Raffa & James O'Riordan
Bernard & Barbara Ruekgauer
Diane Schueler
Ralph A. Swanson
Amy & Harry Verngren
Carina Åhren & Robert Weir

Do you want to make a contribution?

There are several easy ways to support us. Visit our web page americanswedish.org/support or call 215-389-1776 for more information.

Ingmar Bergman and His Legacy in Fashion and Art

Ingmar Bergman (1918-2007) – renowned Swedish director, scriptwriter, dramatist, and author – would have been 100 years old in July 2018. To honor one of Sweden’s most accomplished filmmakers, Bergman’s anniversary is being celebrated worldwide. The exhibition Ingmar Bergman and His Legacy in Fashion and Art introduces Ingmar Bergman and four of his films: *The Seventh Seal*, *Persona*, *Scenes from a Marriage*, and *Fanny and Alexander*. The exhibition emphasizes the influence that Bergman and his films have had on modern fashion. Bergman himself dressed simply throughout his life—checkered flannels, hand-knit cardigans, corduroy trousers, and a simple leather jacket comprised his normal attire. But Bergman’s popularity was so great that these static styles remain iconic in Swedish fashion today.

While disinterested in his own style, Bergman was intensely fascinated by costumes. He often formulated his films’ clothing long before writing any script for the actors and actresses. His great interest in his films’ costumes meant that they have gained an iconicity matching the influence of Bergman’s muted personal style.



In addition to documenting Bergman’s legacy in fashion, the exhibition includes photographs of Bergman’s films, a timeline of Bergman’s prolific career (which includes 60 films, 172 theater productions and around 300 writings), and an installation of 32 rarely-seen clips. These clips take visitors into Bergman’s universe with scenes from films, interviews, and behind-the-scenes clips, among others.

Ingmar Bergman and His Legacy in Fashion and Art will be on-view on ASHM’s Balcony between August 15th, 2018 and January 31st, 2019. This exhibition was developed by the Swedish Institute and is on view at ASHM through the support of the Consulate General of Sweden in New York and the International House’s Lightbox Film Center, Philadelphia’s premier exhibitor of film and moving picture.