

Contact:
Rachel Kiskaddon
Public Relations & Education Manager
Tel: 215-389-1776, Fax: 215-389-7701
Email: rkiskaddon@americanswedish.org



– FOR IMMEDIATE RELEASE –

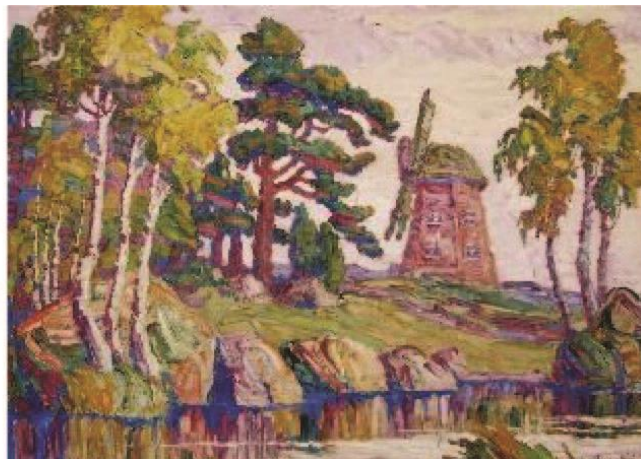
Enjoy American Impressionist artwork at ASHM this summer!
Art for All: The Swedish Experience in Mid-America
July 21, 2022 - February 19, 2023

Philadelphia, PA- The American Swedish Historical Museum is proud to present *Art for All: The Swedish Experience in Mid-America*, an exhibition of paintings and sculptures by Swedish-American artists of the late-19th and early-20th centuries. This colorful and emotive Impressionist art reflects its own time, interprets nature and landscape, and is independent of artificial conventions while keeping Swedish folk traditions alive.

This exhibition features many Swedish artists who studied and absorbed the democratic philosophies of “art for all,” which were espoused by Anders Zorn and the Artist’s League. These young artists immigrated to America to forge new career paths. “Art for all” became a catchphrase in Kansas by the 1930s, stemming from efforts of local artists to offer affordable paintings and prints so that every citizen could have original art in their own homes. Come and explore the significant impact these artists left on their communities and American art!

Art for All: The Swedish Experience in Mid-America

July 21, 2022 –
February 19, 2023



Art for All: The Swedish Experience in Mid-America was conceived and developed by the Birger Sandzén Memorial Gallery and the Hillstrom Museum of Art. It is supported by grants from the ASHM Auxiliary, Barbro Osher Pro Suecia Foundation, Freeman’s, George C. and Esther Ann McFarland Foundation, Midsommarklubben, Red Moose Charitable Trust, Swedish Council of America, and an anonymous foundation. Support is provided in part by the Philadelphia Cultural Fund. Funding for the American Swedish Historical Museum is supported by a grant from the Pennsylvania Historical and Museum Commission, a state agency funded by the Commonwealth of Pennsylvania.

Exhibition Events:

Exhibition Opening Reception

July 21, 2022

6:00 pm

Be the first to experience the new exhibition *Art for All: The Swedish Experience in Mid-America*. The exhibit features paintings and sculptures by Swedish-American artists from the late-19th and early-20th centuries. ASHM Curator Christopher Malone, will discuss the artwork and history in the exhibition throughout the evening. Come enjoy beautiful Impressionist artwork at this free event with complimentary hors d'oeuvres. Pre-registration is encouraged at: <https://www.americanswedish.org/events/art-all-exhibition-opening-reception>

Landscape Painting Workshop with Fleisher Art Memorial

September 25th, 2022

Time TBD

In partnership with the Fleisher Art Memorial, we are offering a one-day immersive workshop that will explore the joys of landscape painting. The day will start with a guided tour of the galleries that will focus on the vibrant landscape paintings in the *Art for All* exhibition. Gathering inspiration from these works, the rest of the day will be spent painting from the veranda of the museum with a stunning view of FDR park. Teaching artist, Givoanni Casadei, will demonstrate the Alla Prima painting technique, discuss perspective, shape, line, and depicting an atmosphere of a scene. Supplies are not provided in this workshop.

Virtual Lecture with Cori North

October 19th

6:30 pm

Join us for a discussion of our new exhibition *Art for All: The Swedish Experience in Mid-America*, with Curator Cori Sherman North, from the Birger Sandzén Memorial Gallery. Check the website for registration.

The American Swedish Historical Museum is located in scenic FDR Park at 1900 Pattison Avenue in South Philadelphia near the Sports Complex. Plenty of free parking is available. For those taking public transportation, the Broad Street Subway's NRG/Pattison Avenue stop is within walking distance or SEPTA's Route 17 (to Pattison) can bring you right to the Museum.

###

Images:

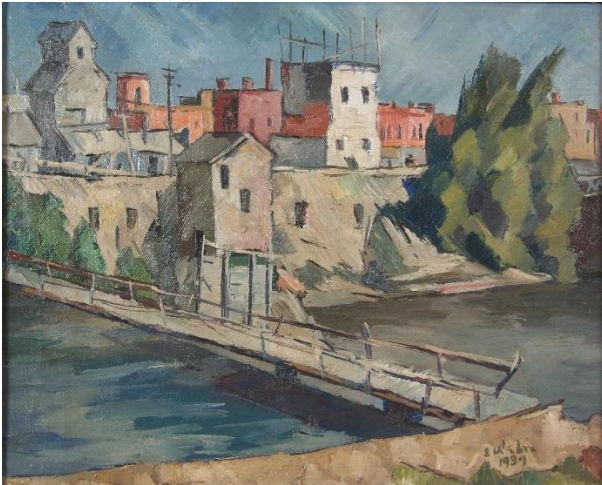


Image 1: Elof Wedin, *Factory Town*, 1939, Hillstrom Museum of Art.



Image 2: Alfred Jansson, *Autumn Landscape*, 1921, oil on canvas, Hillstrom Museum of Art.



Image 3: Birger Sandzén, *Sunset in the Mountains*, 1923, Birger Sandzén Memorial Gallery



Image 4: B.J.O. Nordfeldt, *Women on the Shore-Provincetown*, 1916, Hillstrom Museum of Art.

About ASHM:

Visit the American Swedish Historical Museum to learn the forgotten history of Swedes in Philadelphia. Built in 1926 during the sesquicentennial, the museum's unique interior is divided into a dozen galleries designed to highlight Scandinavian influences in America. The galleries explore a range of topics including the New Sweden Colony, women's history, scientific innovations, and Swedish craft arts such as glass making and woodworking. ASHM hosts a variety of programs from Swedish holiday celebrations like Midsommarfest and Lucia, to history lectures, an ABBA Dance Party, virtual tours, and family programs like Toddler Time.

The mission of the ASHM is to welcome all people to explore cultural identity through the story of Swedes and Scandinavians in America. ASHM is a community dedicated to preserving and interpreting material culture, and is alive with celebrations, exhibitions, and learning experiences. No matter your age or interests, ASHM has something for you! Visit our website www.americanswedish.org to learn more.

The American Swedish Historical Museum is located in scenic FDR Park at 1900 Pattison Avenue in South Philadelphia near the Sports Complex. Plenty of free parking is available. For those taking public transportation, the Broad Street Subway's NRG/Pattison Avenue stop is within walking distance or SEPTA's Route 17 (to Pattison) can bring you right to the Museum.

###