

Contact:
Rachel Kiskaddon
Public Relations & Education Manager
Tel: 215-389-1776, Fax: 215-389-7701
Email: rkiskaddon@americanswedish.org



– FOR IMMEDIATE RELEASE –

Galleries Reopen Friday, January 8th 2021 American Swedish Historical Museum FDR Park, Philadelphia

Philadelphia, PA- With the recent COVID restrictions lifted for museums in Philadelphia, ASHM is happy to announce that our galleries will reopen effective Friday, January 8th at 10 am. We look forward to welcoming visitors, members and everyone in our community back to our galleries. Our galleries are spaces to relax and recharge during these difficult times. The grounds around the museum are also great for reflection with the beautiful setting of FDR Park in south Philly. Join us in this fresh start to the new year to enjoy art, history, and culture at ASHM.

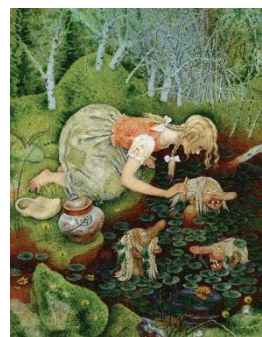
ASHM continues to be a committed community wellness partner and will be adhering to the following state and city policies:

- Staff and visitors are required to wear a face covering at all times while in the building and maintain physical distance of 6 feet.
- Our galleries and gift shop will have limited capacity following the Philadelphia COVID-19 Policy of 5 persons per every 1,000 sq feet. (A line will be formed if necessary.)
- Staff maintain a frequent cleaning schedule of commonly used surfaces.
- Interactive gallery components will be removed to reduce to spread of COVID-19.

For more information please visit our website: <https://www.americanswedish.org/news/message-regarding-covid-19-and-its-impact-museum-operations>

What's on View?

Our current temporary exhibitions *From Fairy Tale to Fantasy: The Art of Gustaf Tenggren* and *Around The World: The Global Curiosities of Carl Otto Lindberg* are on view till March and May, respectively. To learn more about these exhibitions and our permanent galleries visit our website: <https://www.americanswedish.org/exhibitions>



FROM
FAIRY TALE
TO
FANTASY
THE ART OF GUSTAF TENGGREN
September 20, 2020 - March 14, 2021

The American Swedish Historical Museum is located in scenic FDR Park at 1900 Pattison Avenue in South Philadelphia near the Sports Complex. Plenty of free parking is available. For those taking public transportation, the Broad Street Subway's AT&T/Pattison Avenue stop is within walking distance or SEPTA's Route 17 (Naval Base) can bring you right to the Museum.

###