

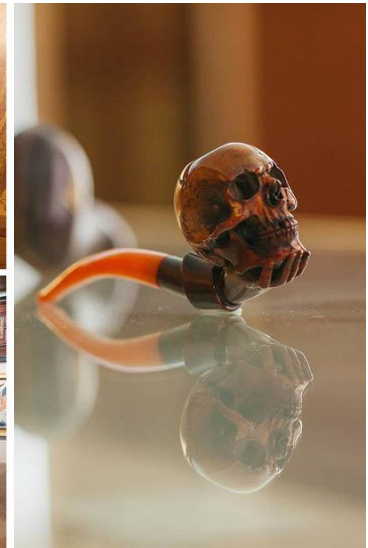


Contact:  
Caroline Rossy  
Communications and Operations Manager  
Tel: 215-389-1776 Ext 108, Fax: 215-389-7701  
Email: [crossy@americanswedish.org](mailto:crossy@americanswedish.org)

--FOR IMMEDIATE RELEASE --

## Announcing ASHM's New Special Collection Tours Starting Thursday, October 31<sup>st</sup>, 7-9pm

**Philadelphia, PA:** ASHM is excited to announce a new series of evening gallery tours! Tours will be on a Thursday evenings from 7-9pm, every other month, each with its own unique theme and focus on the Museum's collection. Tickets are \$15 for non-members, \$5 for members and include refreshments. Space is limited, so be sure to register in advance to reserve your spot.



**Oct. 31 - Night at the Museum: A Creepy Collection Tour** We are kicking off the series with a "Night at the Museum," a Halloween-inspired tour of the Museum's creepier collection items, along with a few treats, including light refreshments and drinks. Costumes encouraged, but not required.



**December 26, 7-9pm - Museum & Glögg Tour** Get cozy at the ASHM with our special Museum & Glögg Tour! Enjoy our general gallery tour and learn about Scandinavian drinking traditions, followed by a *glögg* tasting.

**February 13, 7-9pm - Peasants & Presidents: Folk Art and Political Portraiture** Take a closer look at the Museum's collection of folk art, contrasted alongside with images of queens, kings and presidents as we discuss the meaning and symbolism in both genres.

**April 16, 7-9pm - Hidden Treasures: Behind the Scenes Collection Tour** Take a peek behind the scenes with our Hidden Treasures tour! Museum staff will lead you through our curatorial storage room, and open cabinets in galleries to reveal the treasures within. This is your chance to see museum collections that are not usually on view!

Please contact ASHM at 215-389-1776, [info@americanswedish.org](mailto:info@americanswedish.org) for more information or visit [www.americanswedish.org](http://www.americanswedish.org). The American Swedish Historical Museum is located in scenic FDR Park at 1900 Pattison Avenue in South Philadelphia near the Sports Complex. Plenty of free parking is available. For those taking public transportation, the Broad Street Subway's NRG/Pattison Avenue stop is within walking distance or SEPTA's Route 17 can bring you to the museum.

###