

*Flowers on a Windowsill,  
from "A Home" by Carl Larsson.*

## A Total Work of Heart: The Art of Karin Larsson



Karin Larsson with her loom in the Larsson house.  
Photo, Carl Larsson-gården.

Karin Larsson can be felt in every aspect of the home she shared with her husband Carl Larsson. Each carpet, chair, vase, or even floral display passed by her artistically trained eye, and many of them were designed by Karin herself. It was Karin who gave Carl the idea of depicting their home in his work, and it was her approval he sought after finishing each painting. To the Larssons, beauty was a necessity of life, not a luxury. This idea was found in the writings of architecture critic John Ruskin and Arts and Crafts movement founder William Morris, whose work the Larssons extolled to their family and friends in Sweden. No other place perfectly showcases the Larssons' adherence to these ideas than the home they inherited and built upon in Sundborn, known as Lilla Hyttlös.

Karin's introduction to the world of art happened long before she met Carl. Karin was born in Örebro, but moved to Hallsberg as a child. She grew up in a prominent

middle-class family and attended the local handicraft school and later the Royal Swedish Academy of Fine Arts. Like many unconventional artists of her day, especially women who wanted to learn art beyond what the Royal Academy thought was proper, she applied and was accepted into the Académie Colarossi in Paris. In 1882, she went to live at the artist's colony in Grez-sur-Loing, where she met and fell in love with Carl.

Karin and Carl lived in both Gothenburg and Paris in the years leading up to 1889, when the couple spent their first summer at Lilla Hyttlös. Karin wasn't always happy at home and wrote letters to Carl while he was away expressing how cold and grey the home was and how often the children fought and what little she could do about it. It is possible that turning her home into a total work of art was one way Karin dealt with her frustrations. Her inspiration came from various foreign art journals which Karin and Carl subscribed

*continued on page 2*



## Note from the Director

Home is a truly evocative word. Much has been written over time about what makes a home--is it a place? A building you live in? Or is it the people you live with? There is no doubt that some houses seem more like homes than others. A house feels like a home to me when it is full of personality--art, furnishings, and books collected and loved over time. A pristine, picture-perfect house always feels a bit staged and lacking in warmth. I can appreciate the sense of design, but I always look at an item chosen specifically to meet the décor and wonder if they actually use or love it, or was it selected purely for its shape or color? But of course, that's my sense of what makes a home and not everyone else's!

The concept of home has inspired people across time to write songs, poetry, letters, and of course to create art. The Swedish artists Karin and Carl Larsson created a home together which became a major source of artistic creation and inspiration. Karin's hand in the interior design through textiles and furniture she designed is unmistakable. Carl's paintings of their home brought their home to life for generations of people who have admired his work. In fact, these paintings and the home life depicted in them have become iconic of the Swedish aesthetic that still exists today. Many people the world over can still describe whole rooms from the Larsson home down to the plants in the windowsills!

The exhibition we are hosting this fall, *Let the Hand Be Seen* is a rare glimpse into the home of one of Sweden's most famous families. The pairing of family photos, Carl's paintings, and Karin's textiles give visitors an up-close look at arguably one of the world's most famous homes. It's likely to get you thinking about your own home and what it says about you!

*Tracey Beck*

Tracey Beck

continued from front cover

to, showcasing the leading styles, motifs, and designs present in artistic movements ranging from Art Nouveau to Arts and Crafts. The home was a shared creation between Karin and Carl. Karin did, however, oversee much of the house's construction and remodeling between 1890 and 1912. Their home is said to be a reaction against industrialization and was designed and added to by utilizing the local craftspeople in and around Sundborn.

Karin first remodeled the dining room around 1890, using red and green to bring the room together, a color combination that was popular in England at the time, especially in the home of William Morris where he favored earth tones over the more brightly colored Victorian palette.

In this room, we begin to see Karin's use of modern, geometric motifs, such as a tapestry placed behind the couch near the dining room table showcasing the four elements: earth, air, fire, and water. Karin's sunflower pillow sat on the couch where Carl sat at the head of the table. The red slat-back chairs surrounding the Larsson family dining table were designed by Karin and Carl and produced by a local carpenter, cabinetmaker, and joiner named Hans Arnbom. In contrast, the drawing room, the family's most used living space, is much lighter and uses less saturated colors - these differences make each room in the house its own space, instead of one

continuous theme. Plants and plant stands played an essential role in Karin and Carl's interior. Simple potted plants can be seen throughout the house. Karin created a modern plant stand to show off plants near a window without losing views of the outside landscape.

Much of the interior of Karin's bedroom was decorated with objects Karin designed and made herself, including the chandelier, the children's green beds, and the *Rose of Love* portière- a wool tapestry knotted with fishing-net yarn to resemble macramé. The tapestry lets light into both rooms and allowed the couple to make eye contact. The tapestry continues the motif used in the Four Elements tapestry in the dining room.

Though lauded as one of Sweden's most prolific and favorite artists, Carl Larsson's success would not have been achieved without Karin's unique artistic expression, which dominated the Larsson's home. As Karin's art continued to modernize, Carl's became more conservative, though both of their styles came together to make the house uniquely their own. The popularity of their aesthetic helped the Larssons to expand their home, its furnishings, and the comfortable life which Carl desired after a childhood of poverty and sadness. Karin's willingness to abandon her life as a public artist to one focused on the private interiors populated by the family she was



Larsson family dining room. Per Eriksson (Photographer), Carl Larsson-gården.

raising, found her creativity refocused on textiles, furniture, and ultimately as Carl's artistic advisor. Karin's burgeoning strong-willed character shaped her family life and her surroundings, resulting in a three-dimensional *Gesamtkunstwerk* (total work of art) that combined architecture and furniture with colors and patterns, and sentimentality with functionalism. While the work of other artists continues to live on in the galleries of museums, Karin's work remains a tangible and experiential world we can still encounter in her home, Lilla Hyttnäs, which is still presented as it was when Karin passed away in 1928.

This October, visitors can walk through Karin's world when the exhibition, *Karin Larsson: Let the Hand Be Seen* opens at the museum. Visitors will be immersed in the interiors of the Larsson home, greeted by the subjects in Carl Larsson's paintings printed in large scale, and surrounded by exact reproductions of Karin's textiles and furniture. The exhibition invites you to visit Karin and Carl at their home, where

celebrations, quiet moments, and beauty come together. *Karin Larsson: Let the Hand Be Seen* places Karin alongside Carl as an equally important partner, artist, and designer who helped transform Swedish and international ideas of art's transformative effect on the home and everyday family life.

The *Karin Larsson: Let the Hand Be Seen* exhibition was created by the Carl Larsson Gården. It was made possible at ASHM by the Erik Dagert Muther Cultural Exchange Fund, and is also supported by grants from SWEA Philadelphia, the ASHM Auxiliary, Barbro Osher Pro Suecia Foundation, Midsommarklubben, and an anonymous foundation. Funding for the American Swedish Historical Museum is supported by grants from the Pennsylvania Historical and Museum Commission, a state agency funded by the Commonwealth of Pennsylvania, and the Philadelphia Cultural Fund.



"The Rose of Love" tapestry hangs between Carl and Karin's bedrooms and was given to Carl by Karin. *The Rose of Love* tapestry by Karin Larsson. Per Eriksson (Photographer), Carl Larsson-gården.

## Amandus Johnson Service Award: Görel Bengtzon and Roman Hrycushko

Görel and Roman have been involved with ASHM for over 20 years. Their volunteer work has impacted many of the big annual Museum events in addition to supporting new pop-up program opportunities and exhibitions. Görel has been a long-standing member of the Midsommarklubben, serving as Vice President and Secretary over the years. She is the "glögg bottle lady," washing, labeling and making lovely fabric hats for all of the bottles of glögg the club sells each year. The maypole for Midsommarfest is a result of Görel's artistic skills, and Roman supports with the set-up and take down of the pole each year. In June of 2020, the two of them came in to dress the maypole so that the Museum tradition continued unbroken even during the darkest days when we weren't able to have an in-person event.

Roman has been a member of the Pea Soup Committee for years and is known for his great service with a smile, whether by serving soup or serving at the bar! For many years when the museum was celebrating *valborgsmässoften*, Roman was one of the people building the glorious fire.



Roman and Görel are enthusiastic supporters of new things at the museum as well! They have embraced our new fundraising event, ExtrABBaganza, where they mix and serve specialty cocktails and mocktails! As a couple, they helped erect the Better Shelter during the exhibition *Where the Children Sleep*, which was an outdoor example of emergency housing created by the IKEA Foundation and used for refugees around the world.

ASHM is so grateful for this couple's enthusiastic support and we are proud to confer on them the 2023 Amandus Johnson Service Awards.



# Upcoming Events and Registration Info

## To Register For Events

call **215-389-1776**, or visit online at  
[www.americanswedish.org/calendar.htm](http://www.americanswedish.org/calendar.htm)

There is always something going on at the American Swedish Historical Museum. See below for scheduled events. Please check with the Museum to confirm dates and other details. Refunds will not be granted for cancellations after the registration deadline. To register for events by phone call (215) 389- 1776. Online registration is available through links in the museum's email announcements or on the Events Calendar page of our website, [americanswedish.org/events](http://americanswedish.org/events).



### Toddler Time 10:30am-11:30am

The third Tuesday of each month ASHM offers specially designed programs to introduce Swedish culture through art, science, and literature in

uniquely fun and creative ways to children ages 2 to 5 years old. Programs are \$5 per child for non-members and free for members. Be sure to check our website for the most up-to-date program information and to register.

August 15  
September 19  
October 24  
November 21  
December 19



### ASHM Virtual Swedish and Finnish Language Classes Beginning the week of September 11th

Be sure to register for our 10-week virtual Swedish or Finnish language class

program! Whether you are new to the subject or fluent, there is a level for you. Check our website for more information and to register. \$180 for members and \$235 for nonmembers. Spaces are limited and fill up quickly!

### ASHM Annual Meeting Sunday, September 10th 3 pm

ASHM members are welcome to join us for our in-person annual meeting, where we will present this year's Amandus Johnson Volunteer Service Award to Görel Bengtzon and Roman Hrycushko. Attendees will also get a last chance to view the Marimekko exhibition before it closes. Registration required.



### Nordic New England: Textiles on Tour! September 20 – 23

Calling all textile lovers! Join ASHM as we travel through New England in the fall to visit Scandinavian textile artists.

Highlights of the experience include a private tour of world-renowned tapestry weaver Helena Hernmarck's studio in Connecticut, a visit to Old Sturbridge Village with a tour of their textile exhibition and hands-on sewing experience, and a visit to the Vävstuga Weaving School in Massachusetts. For a full itinerary and more information, please visit our website.

### Virtual Field Trip Friday: Dalarna Museum Friday, September 29 12:00-1:00 pm

Take a break from your day, whether at home or work, to be immersed in a Scandinavian cultural experience. This month we will be visiting the Dalarna Museum in Falun Sweden, the regional home of the iconic Dala Horse. Join us as we dig into the history of the area and the museum's vast collection of textiles, furniture, and folk art. The program is one hour and is presented over Zoom. \$5 for members and \$10 for nonmembers, registration is required.



### Exhibition Opening: Karin Larsson: Let the Hand Be Seen Thursday, October 19 5:00-8:00 pm

The American Swedish Historical Museum is honored

to debut the artistic work of Karin Larsson for the first time in America! This exhibition is on loan from the Carl Larsson-gården in Sweden and will be touring across the U.S with ASHM being the only East Coast location. Be the first to see her diverse body of work at the opening of the exhibition with ASHM Curator, Christopher Malone. The exhibition opening is free to the public with light refreshments served. Please RSVP online.

### ASHM Virtual Member's Discussion: The Art of the Larsson's Thursday, October 26 6 – 7 pm

All ASHM members are invited to this exclusive discussion. This month, members will get an introductory guided look at our new exhibition *Karin Larsson: Let the Hand Be Seen* as we discuss the artwork of both her and her husband, Carl Larsson, and their influence on the Swedish world of art. This member-only program is free and held over Zoom. Visit our website to register for the program or become a member today!



### New Sweden History Conference Saturday, November 4 9:30 am – 3 pm

In-person & Virtual Options, held at the Museum of the American Revolution.

This year's conference topic is "Contested Spaces: Colonial and Indigenous Concepts of

Landscape Along the Delaware River Valley." The beliefs and practices behind the use of land and natural resources varied among the groups that occupied the region along the Delaware River. The conference will explore these groups and their relationship with each other in the context of land use along the Delaware River. Please check our website for further details and to register.

### Free Second Sunday: Special Family Activity Day Sunday, November 12 12 pm – 4 pm

Bring the family to the Museum for a free day of activities! Kids will learn about our newest exhibition *Karin Larsson: Let the Hand Be Seen* through textile crafts and exploration. Check our website for more information and to RSVP.



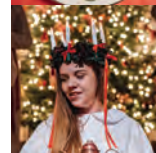
### Lucia Rehearsals Saturday, November 11th from 10 am – 12 pm and Sunday, November 19th from 2 pm – 4 pm

Museum members are invited to have their children participate in

our annual Lucia performance on December 2nd and 3rd. They are sure to have fun dressing up as tomtar, Pepparkakor, folk dancers, star boys, and Lucia and her attendants while singing traditional Swedish Christmas songs. Attendance at both rehearsals is required. Please visit our website for more information and to register.



### Julbord Friday, December 1st 5pm – 9pm



### Lucia & Christmas Market Saturday and Sunday, December 2nd and 3rd 10am – 4pm

### Virtual Tour of the Gamla Stan Christmas Market! Tuesday, December 19

## Tinseltown Holiday Spectacular comes to FDR Park

This holiday lightshow developed by Comcast Spectacor will be in the area directly in front of the museum this holiday season. Please check the ASHM website for parking information updates between October 25th and January 11th!

# Tinseltown

HOLIDAY SPECTACULAR





# Images from Recent Events

Photographs by  
ASHM Staff



▲ Midsommarfest visitors dancing around the Maypole to the music from the Last Chance duo



▲ Danes singing the Danish national song



◀ Design Date Night couple showing off their Marimekko-inspired napkin prints



▲ Couples wearing flower crowns at Midsommarfest



▲ Visitors at our first Scandinavia Celebration Day.



▲ Families at Toddler Time Celebrate Sweden.

▼ Museum guests at Wawa Welcome America Museum Day.





# Board of Governors Candidates for 2023 – 2026

The ASHM Nominating Committee presents the following candidates for three-year terms on the Board of Governors beginning in September of 2023.

## TO SERVE a 1st TERM:

**Dorothy (Dee) Kaplan** is a Philadelphia native. She served as Deputy Secretary for Business Assistance at the Pennsylvania Department of Community and Economic Development during the Rendell administration, where she was responsible for overseeing administration of the department's comprehensive programs to assist businesses across the Commonwealth. Prior to her appointment at the DCED, Dee had over 25 years of experience in economic and workforce development. As the senior vice president for the Philadelphia Workforce Development Corporation, she planned and directed comprehensive services and funding for regional employers. During her tenure with the City of Philadelphia, Ms. Kaplan was Director of the Mayor's Business Action Team. With this team, she developed a marketing strategy to bring businesses and investment into Philadelphia, and worked on structuring incentive packages for companies looking to expand or relocate in the city. Dee served as Vice President for Marketing at the Philadelphia Chamber of Commerce, following ten years in management at a division of Dun & Bradstreet. Her initial career as a registered nurse has served well in her current work on medical research committees at Drexel University, Saint Joseph's University and Children's Hospital of Philadelphia. She is also a member of the board at the Philadelphia Health Care Exchange.

**Marja Kaisla** moved to the US from her native Finland in 1987, and has enjoyed an active concert career as a pianist on stage, radio, television, and major motion pictures while living a multifaceted life as a cultural and educational advocate and as a governmental consultant on Nordic history, economic and cultural issues. She received the *Finnish Government Centennial Award*, the country's highest civilian award in 2013, for promoting Finnish and Nordic culture in the United States. Marja has been President of the Finnish-American Society of the Delaware Valley since 2012. She was Vice President of New Sweden Alliance from 2012-2016. Subsequently, she was Co-President of Global Education Initiatives Program 2013-2017, a public-private partnership of multi-faceted scholarship and fellowship programs for students and teachers designed to increase educational and research collaboration in basic and higher education between Finland and the US.

As a performing artist, she made her Carnegie Hall debut in 2005 as the pianist of Trio Excelsior, with whom she has toured extensively around the US. Besides solo concert touring, she has also toured extensively as a member of Piano4, a unique ensemble of four pianos. She received her

musical education in Finland, Russia, Switzerland and the US. Marja has performed for the Nordic countries' royal families, President Biden as well as many US Governors and Senators. She was Finlandia Foundation National's *Performer of the Year* in 2013 and 2014. Subsequently, she also became a member of the Board of Trustees of Finlandia Foundation National (2014-2016). Recognized by the African American Museum in Philadelphia in 2016 as a recipient for *Outstanding Achievement in Innovative Programming as a Legend of Jazz, R&B and Gospel*, Marja is also a recording artist. She is the Artistic Director of Young Musicians Musicales, a musical organization presenting young instrumentalists of highest caliber from the US and abroad in concerts in historic landmark residencies in the Philadelphia area. Besides her concert activities, Marja is a translator, consecutive interpreter, and instructor for ASHM's Finnish language classes.

**Susan A. Ryszka** is a native of Buffalo, New York. She is a graduate of the State University of New York at Buffalo with a degree in Finance and Accounting. She was Finance Director of the Organic Peroxides Division ("OPD") of the company now known as Arkema, Inc., reporting to the President of the OPD and responsible for establishing profitability standards and goals and reporting results to Senior Management. During her career, she lived and worked in Paris for four years, immersing herself in French language, culture and international business. She later settled in Philadelphia, working at the North American corporate headquarters. Since retiring Susan has managed the family real estate business. She also has volunteered her time to her daughter's school programs. She served as Treasurer of the Baldwin School Parent's Association and organized parent and student events for the Whitemarsh Boat Club and MIT crew teams. She served on the Board of Directors for the Red Heel Theater. She is also Majority Inspector of Elections for Division 12 of the 8th Ward in Philadelphia.

## TO SERVE a 2nd TERM:

**Anna-Lena Bromberg** was born and raised in Västergötland, Sweden, and immigrated to the US in 1969. She worked as an RN, then established and managed a private, non-profit art foundation—The Abud Family Foundation for the Arts in Lawrenceville, NJ for 10 years. She is a former Member of the Board of Directors, Bucks County Housing Group, and served as Board President for a 3 year term. Anna-Lena is an active supporter of Arts and Cultural Council of Bucks County, Board member from 2011 until 2018, Treasurer, and President for two terms. She is also a member SWEA Philadelphia, currently co-chairing the Events and Program committee, and was Board president 2-year term. Although her working career was in the medical field, art and culture have a special place in her heart and as she is now enjoying retirement, finds herself

involved in many art projects, and festivals in the Bucks County Area. She served as ASHM Board Chair for the past year, Spring Ting Chair for 3 years, and is a member of the Museum Committee.

**Jorgen Flood** was born and raised in Oslo, Norway. After high school he spent a year in the Norwegian Army before attending Oslo Institute of Business Administration for his bachelor degree followed by University of Wisconsin for his graduate degree. However, history was always one of his main interests. After several international assignments as a senior business executive for a Norwegian industrial group, he moved permanently to the Philadelphia area in 1997. In 2001 he started his own business, as a partner for Scandinavian companies trying to get a foothold in the US market. He has served as a Board member of both the Swedish-American and the Norwegian-American Chamber of Commerce Philadelphia Chapter since they were established in this area. In his spare time, he is still writing about Scandinavian history/historical fiction and has so far published 15 books. He is a Board member of Sons of Norway and LEVS (Leif Ericsson Viking Ship). He has held numerous presentations about aspects of Scandinavian history in Sons of Norway, The Danish Brotherhood, ASHM, Scanfest, Brandywine Valley Writers Group, and many others.

**Matthew Lund** was raised in northern Minnesota, with roots in the Norwegian American community there. Matthew received a B.S. in Electrical Engineering at the University of Minnesota and had a career as an engineer before getting a Ph.D. in Philosophy at University of Illinois at Chicago. He is currently an Associate Professor of Philosophy at Rowan University, where he has been since 2004. He is a specialist in philosophy of science, currently finishing his fourth book; he is also a German translator. As a member of ASHM he is happy to reconnect with Scandinavian traditions and commune with those who know the difference between lefse and lutefisk. He and his family live in Wenonah, New Jersey. Matt has served on ASHM's Finance Committee and the Buildings and Grounds Committee and chairs the Compensation Committee.

**Ulf Åkerblom** grew up in Stockholm, Sweden. He has a bachelor's degree from the University of Stockholm where he majored in economic geography, economics and business administration. In 2005, Ulf moved to Philadelphia to run the subsidiary of a Swedish medical device company. He became a US citizen in 2009. Ulf is now retired and lives in Bryn Mawr, PA, with his wife Susan. Ulf was the Honorary Consul of Sweden in Pennsylvania for several years. He is the founder and owner of Accent Ventures LLC. Prior to moving to the U.S., Ulf worked for the Swedish government, had his own PR firm, and was an executive in public companies. Recently he started working part time as a limousine chauffeur.

# Contributions

**Do you want to make a contribution?** There are several easy ways to support us. Visit our web page [americanswedish.org/support](https://americanswedish.org/support) or call **215-389-1776** for more information.

## New Members

May 1 – June 30, 2023

### Organizational

Historic Gloria Dei Preservation Corporation

### Household

Linda Brickey  
Rhonda Gable  
Kari Gormley  
Carla Hinceman  
William Lee  
Kevin Quinlan  
Oz Sultan

### Individual

Sofia Calabrese  
Frida Hansson  
Laurie Larson  
Karl Mobed  
Dinahlee Saturnino Guarino

### Senior/Student

Julie Hanley  
Rae Ellen Hinken  
Kristen Widham

## Contributions

May 1 – June 30, 2023

### Serafimer

Anonymous  
Finlandia Foundation

### Vasa

Anonymous  
George C. & Esther Ann McFarland Foundation  
Erik & Nicole Muther  
Carl D. Rapp  
Al Wulff  
Mary McCoy

### Gold

Anonymous  
LaVonne Johnson  
Earl & Sylvia Seppala  
Margaretha Talerma  
Cynthia & James Traverso

### Silver

Claudia Curtis  
Jill D'Andrea  
Nils & Patricia Herdelin  
Ingrid Rosenback  
Abby Shaw  
Kristina H. Smith

Jean Spoolstra  
Ruth Lindeborg  
Ruth Rizzi

### Bronze

Anonymous  
Linda & Kenneth Alexy  
Per Blomquist  
Ingrid Cagan  
Tracy Carr  
Ken & Kerstin Cook  
Jill Ferguson  
Thomas & Mary Ann Hudson  
Mike Hughes  
Carl R. Karlsson  
Karin Kornaga  
Matthew Lund  
Ingrid McAllister  
Mary Anne Carlson Morgan  
Lisa Redfield

*in memory of Eleanor Redfield*

Ian Samways  
Anne Wattman  
Sheldon Williams

### Friend

Anonymous  
George Denliker  
Michael Girardi  
Dawn Gould  
Christina Holm  
Sylvia Holteen  
Margaretha Joelsson  
Sara Joslin  
Rosemary & Jeffery Moller  
Thomas Nilsson  
Christian Roden  
Edith Rohrman  
Diane Sandvik  
David O. & Mary H. Segermark  
John Tepe

## Elisabeth Brown Makes a Special Gift





The American Swedish Historical Museum is grateful to Elisabeth Brown for donating the repair cost for two windows in the Jenny Lind Room. With this donation from Elisabeth, the museum was able to restore the windows to their former glory. Elisabeth says she is honored to have “her windows” in the room with such outstanding historical figures as Jenny Lind and Carl Larsson. She now feels like she will be part of this place forever. For Elisabeth, the museum is her home away from home, and she genuinely enjoys participating in the many Swedish events the museum arranges.

The Museum has meant so much to her over the years that she wanted to contribute to a specific project to show her appreciation. And she thought, what could be a better way than to make the building more beautiful? Elisabeth said she was pleased with the beauty of the restored windows which give the feeling of an authentic Swedish home, with the green leaves outside and white walls inside. She believes this is an excellent way to use one's required minimum distribution from a retirement account. It benefits you as an individual and at the same time a charitable organization dear to oneself.



1900 Pattison Ave.  
Philadelphia, PA 19145  
215.389.1776  
[www.americanswedish.org](http://www.americanswedish.org)

 americanswedish  
 @americanswedish

NONPROFIT ORG.  
U.S. POSTAGE  
PAID  
Philadelphia, PA  
Permit No. 1350

Connecting  
Cultures and  
Community

## Nordic New England: Textiles on Tour!

September 20–23



What better place to experience all that fall has to offer than a trip through New England in September to visit Scandinavian textile artists?

On this once-in-a-lifetime travel opportunity, we will visit world-renowned Swedish weaver Helena Hernmarck's studio in Connecticut. Following the studio visit, we will travel to local gallery Browngrotta Arts to view their showcase of textiles and unique sculptural, ceramic, and mixed media works. The following day will be spent at Old Sturbridge Village in Massachusetts, including a private tour of their textile exhibition and a hands-on yarn sewing activity.

For the culmination of the trip, we will be visiting the Västuga Weaving School to meet with founder and textile expert Becky Ashenden. Becky will be joined by visiting Swedish weaving expert Monica Hallén. She is a designer, weaver, and embroiderer, and has co-authored a number of very popular books. In addition to these amazing textile experiences, the itinerary also includes a visit to the Yankee Candle flagship store in Deerfield, Massachusetts and the Big E Festival--the largest agricultural event on the eastern seaboard.

Hotel accommodations will be at the boutique Hotel Zero Degrees in Norwalk Connecticut and the Homewood Suites in Hadley, Massachusetts. The trip

includes luxurious minibus transportation, accommodation, select meals, and all admission fees.

Visit [www.americanswedish.org/events](http://www.americanswedish.org/events) to get all the details about the trip. Register by **August 30th.**