

Annual Report FY 2025

July 1, 2024 — June 30, 2025



LAYING THE GROUNDWORK

As I reflect on this past fiscal year, I find myself returning to a familiar image: our ongoing home renovation project. Before the tile is ever laid in a new shower, there's an essential—often unseen—process of preparation. Multiple layers must be carefully built up to create a solid, lasting foundation. Progress can seem slow, and the importance of each step may not be obvious, but every part is essential.

This year has been much the same for the Museum. The Board of Governors and staff have focused on laying the groundwork for a transformative milestone: our centennial anniversary in 2026. Much of this work has happened behind the scenes, but it is setting the stage for long-term impact and success.

We began by strengthening our fundraising infrastructure—partnering with a consulting firm and hiring our first full-time Development Manager, Aja Beech. These investments are already increasing our ability to secure support from individuals, foundations, and government sources.

At the same time, our new curator, Brett Peters, has been leading the planning of special exhibitions for 2026. In collaboration with professionals in the field of Nordic America, we've begun shaping our main anniversary exhibition. This work was further supported by archivist Jeff Cantwell, who spent a summer organizing and exploring our institutional records, helping us reconnect with the Museum's deep and fascinating history.

We also focused on growing our relationships with the local community—another vital part of growing and fulfilling our mission. One standout effort was a pilot exhibition in partnership with SEAMAAC featuring artwork from immigrant artists participating in art-making programs. And as the park around us undergoes significant construction, our building has increasingly become a community gathering place—a role we're proud to support and expand.

Laying a strong foundation takes time, patience, and vision. Thanks to your support, we're building something truly meaningful—one layer at a time.

Tracey Rae Beck

Tracey Rae Beck
Executive Director



ASHM Development Manager Aja Beech leads a discussion with Centennial Campaign Ambassadors at the home of ASHM Board President Erik Muther.



ASHM won *Metro Philadelphia's* Philly Best contest in 2024, the third time the Museum has been voted the top-ranking museum in the city since 2021. We are humbled once again by the outpouring of love we have received from our community.

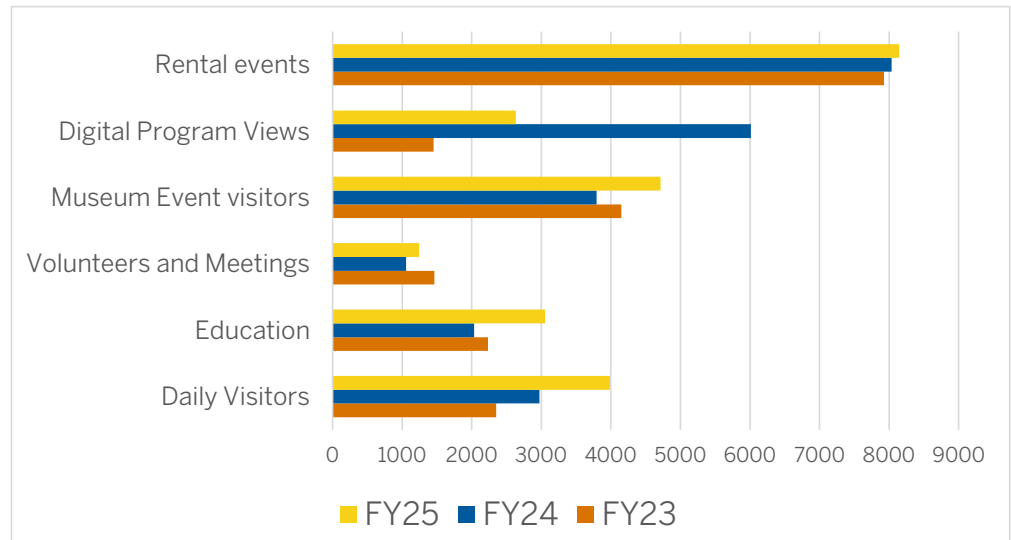
ATTENDANCE

Total Visitation

FY25 23,781

FY24 23,907

FY23 19,578



Tyler Graybeal, owner of Sweetish Candy in Lancaster, PA spoke about his collection of historic Swedish candy objects and brought the Sweetish mobile candy Pick-and-Mix wall to the 2024 Annual Meeting.



This year's Spring Ting event featured a live auction and a musical performance from Honoree Oskar Stenmark.



The Philadelphia Eagles staff came to ASHM for their Earth Day service project planting trees along the Museum's fence line. ASHM staff presented the Eagles with a hand-carved and hand-painted Dala horse celebrating the Eagles Super Bowl win which was made by father-daughter artist team Ed and Annika Gyllenhaal.



Local groups from FDR Park and beyond used our facility as a meeting space or an event venue this year, including the 2025 Main Street Now Conference which held its Big Bash event at the Museum and the FDR Park Boathouse in April.

EXHIBITION HIGHLIGHTS

Sauna is Life: Sauna Culture in Finland

Changing Exhibition Gallery: October 18, 2024–March 9, 2025

The Finns bring sauna wherever they go, including the United States, and the tradition still thrives in certain regions of America where many Finnish people have settled. *Sauna is Life: Sauna Culture in Finland* featured a walk-in sauna from Baltic Leisure, sauna objects, and stories, photos, and videos shared with us from home and abroad. The exhibit was embellished with white towels, birch whisks, and a tar-dipped *Saunatonnttu*, giving it a clean, natural feel while activating the senses. In addition to Finnish sauna culture, the exhibition also discussed sweating practices from cultural groups around the world.

Sauna is Life: Sauna Culture in Finland was organized by Nordic Northwest in Portland, Oregon and made possible by the generous support of Finlandia Foundation National.

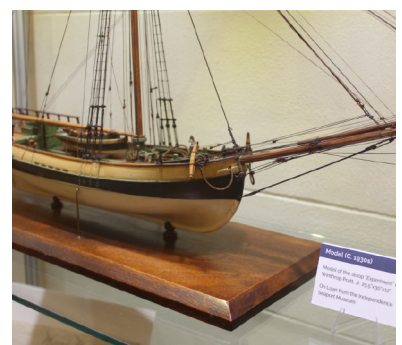


Through the Eyes of Philadelphia's New Americans: Art, Resilience, and Community

Changing Exhibit Gallery: March 26, 2025–June 8, 2025

Through the Eyes of Philadelphia's New Americans: Art, Resilience, and Community celebrated the strength and courage of immigrants and refugees who have faced unimaginable challenges and found healing through art. The first in a series of community exhibitions at ASHM highlighting stories of immigrants in Philadelphia, this exhibit was curated by SEAMAAC staff and showcased over 40 pieces of art created in SEAMAAC's art resiliency classes, including mosaics, ceramic tableware, and a free-hanging Shibori cloth.

Through the Eyes of Philadelphia's New Americans: Art Resilience, and Community was curated by SEAMAAC and supported by a planning grant from the Philadelphia Funders Collaborative for the Semiquincentennial.



Across the Atlantic: Sloopers and the First Organized Emigration from Norway

Balcony: Opened May 22, 2025

Across the Atlantic explores the trans-Atlantic journey of the first organized group of Norwegian immigrants to sail to the United States in 1825. Historic objects from the Vesterheim Museum, Independence Seaport Museum, and private collectors include a 1825 Norwegian passport, a model sloop, and a Norwegian traveler's trunk. Surrounding the objects is an exhibit design with ropes, masts, rigging, and barrels, giving visitors the effect of coming aboard a nineteenth-century sailing vessel on the ASHM Balcony.

Across the Atlantic: Sloopers and the First Organized Emigration from Norway is made possible with support from the Sons of Norway Foundation.



And Let Victory Tell the Rest: 250 Years of Shipbuilding in Greater Philadelphia

Changing Exhibition Gallery: Opened June 26, 2025

As part of the United States Navy's 250th anniversary celebration, *And Let Victory Tell the Rest* showcases the story of shipbuilding in and around Philadelphia from the Revolutionary War to the Cold War. Curated by the National Museum of the United States Navy, the exhibit highlights ships with models, blueprints, and on-board artifacts, as well as the people who helped build and design them, including Swedish Americans John Ericsson and John Dahlgren.

And Let Victory Tell the Rest: 250 Years of Shipbuilding in Greater Philadelphia is curated by the National Museum of the United States Navy. It is part of Homecoming 250, a citywide celebration of the 250th anniversary of the US Navy in Philadelphia.



Exhibitions at the American Swedish Historical Museum are supported by grants from the ASHM Auxiliary, Barbro Osher Pro Suecia Foundation, Midsommarklubben, Red Moose Charitable Trust, and an anonymous foundation. Support provided in part by the Philadelphia Cultural Fund. Funding for the American Swedish Historical Museum is supported by a grant from the Pennsylvania Historical and Museum Commission, a state agency funded by the Commonwealth of Pennsylvania.

SPECIAL EXHIBITION PROGRAMMING

Free Family Day with SEAMAAC: For ASHM's Free Second Sunday on Mother's Day, the Museum partnered with SEAMAAC and hosted two teaching artists, SEAMAAC staff, and three vendors from FDR Park's Southeast Asian Market. The event brought over 200 people to the Museum from all across the community—ASHM visitors, SEAMAAC clients, friends of market vendors, FDR Park users, and local families—culminating in the highest attendance for any Free Family Day at the Museum so far!



Exhibit Openings



ASHM hosted Finland Foundation National's performer of the year comedian Miska Kajanus for the opening of the *Sauna is Life* exhibit.



Susan E. Satkowski, Honorary Consul for Norway in Pennsylvania with representatives from IK Start USA including Co-Founder and CEO Jean Bley at the opening for *Across the Atlantic*. Synnøve Rizo-Patron from the Royal Norwegian Consulate General in New York also spoke at the event. The opening was supported by NorCham Philadelphia, IK Start, and Sons of Norway Restauration Lodge 3-555.



Special guests at the opening for *And Let Victory Tell the Rest* included Monica A. Hallman, Vice President, Homecoming 250 Navy Marine Corps; Patrick Burns, Deputy Director, Naval History Heritage Command; RADM Ken Blackmon, Vice Commander U.S. Fleet Forces Command; and Gordon Calhoun, Curator and Historian for NMUSN.

PUBLIC PROGRAMS HIGHLIGHTS

New Sweden Legacy Lecture Series

The New Sweden Legacy Lecture series evolved from the one-day New Sweden History Conference to reach people on a broader scale in a more convenient virtual format. The program committee includes members from various historical organizations and universities who have come together to promote understanding of the New Sweden Colony and its lasting impact on history. The inaugural series featured one virtual lecture per month from January through March followed by an in-person lecture and brunch at ASHM in April. The series was free to the public sponsored by ASHM, the Finnish-American Society of the Delaware Valley, the New Sweden Alliance, the University of Delaware, the Swedish Colonial Society, and the Delaware Swedish Colonial Society.

Free Craft Fair & Textile Family Day

The ASHM Auxiliary hosted a well-attended Craft Fair in July at the Museum. Due to the summer heat, 12 vendors selling handmade goods, as well as a few craft demonstrators, were set up indoors throughout the Museum. The Auxiliary also provided food and beverages for sale. Many vendors were new to ASHM and signed up to return for the Lucia & Christmas Market.

Rambo Cider & Events

ASHM partnered again with Liquid Alchemy Beverages to create the Rambo's Revival—New Sweden Apple & Lingonberry Cider made from apples grown on ASHM's apple trees. This year, the cider was sold in specially designed cans at two events, one at ASHM that was part of Philly Cider Week, and one at Liquid Alchemy in Wilmington, Delaware.

Hemslöjd Craft Programs

Dala Horse Painting: Ten participants explored a wide range of Dala horse styles, from those crafted by early 20th-century Swedish painters to more recent interpretations by artists in Sweden and America. Annika & Kirsten Gyllenhaal demonstrated a variety of painting styles and techniques using actual examples from a local Dala horse collection, which was on display. Participants received an unpainted hand-carved Dala horse made by Ed Gyllenhaal to paint during the workshop, with the option to follow traditional patterns or create unique designs.

Julbock Making: Kirsten Gyllenhaal returned in December to host a new Craft Night Out program that focused on a Swedish Christmas favorite: straw Julbock weaving! Participants in the workshop received a tour from Curator Brett Peters focused on Swedish holiday traditions, enjoyed glögg and treats, and then handcrafted this unique decoration.

Embroidery: Participants in this workshop were able to learn the basics of embroidery from a study of hand-embroidered examples in ASHM's collection. Led by Curatorial & Museum Assistant Olivia Henley, the class learned about embroidery tools, practiced basic stitches, and then began working on their own hand-embroidered napkin, following a pattern taken from the *Weaving a New Chapter* gallery.



PUBLIC RELATIONS HIGHLIGHTS

Swedish Folk Weavings for Marriage, Carriage, and Home 1750-1840 featured in the Textile Eye Magazine, August 2024

ASHM partnered with Swedish Press for their October-November issue focused on Finland with articles about *Radically Marimekko* and *Sauna is Life: Sauna Culture in Finland*, October 2024

Rambo's Revival Cider collaboration with Liquid Alchemy featured in *Delaware Today*, October 2024

ASHM wins Best Museum in *Metro Philadelphia's Philly's Best* Contest, November 2024

ASHM Director Tracey Beck and Curator Brett Peters interviewed for the WRDV Radio program "I Hear America Talking," December 2024

Ebba Sparre Saunas and *Sauna is Life: Sauna Culture in Finland* covered by Fox29, the *Philadelphia Inquirer*, NBC10, *Philadelphia Magazine*, *Philly Voice*, KYW Newsradio, *Philadelphia Today*, and 6abc, December 2024–January 2025

The Philadelphians public artwork by local artist duo Hironaka & Suib opened at Love Park's Welcome Center featuring ASHM with former staff member Caroline Rossy talking about the New Sweden Colony and Swedish immigrants in Philadelphia, May 2025



Social Media

Instagram: ASHM's Instagram profile showed massive growth in response to the Ebba Sparre Sauna Collective outdoor saunas. As the Museum was tagged in and shared articles and posts about the outdoor saunas both by Ebba Sparre and by sauna-goers, ASHM's Instagram reach dramatically increased, with a huge growth in our follower count and in number of visits to our profile.

	Follower count increase	Profile visits	External link clicks	Impressions
FY25 Average (prior to December 2024)	28	300	60	10,200
December 2024	522	4,100	900	23,600

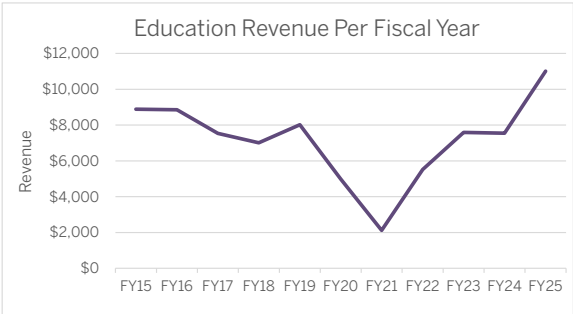
Facebook: The Museum has seen high levels of engagement on Facebook this year, particularly with content discussing Swedish foods and traditions. In November and December, Swedish Sandwich Cake Day, Swedish National Cookie Day, and Swedish Kladdkaka Day had record levels of engagement including more than 1000 likes and more than 200 shares per post that translated to rapid increases in followers for those months. Posts about Scandinavian celebrations like Valborg, Swedish National Day, and Icelandic National Day also particularly engaged our audience this year.



ASHM created the Museum's most viewed TikTok to date this year: a video about St. Lucia with more than 600 likes!

EDUCATION PROGRAMS

Education By the Numbers	
Number of Field Trips	25
Number of Outreach Programs	72
Number of Family Programs	4
Total Child Attendance	2336
Total Adult Attendance	719
Total Attendance	3055



Attendance and Revenue Increases

In FY25, total education attendance was up by about 1000 people from FY24, and the Museum had the highest revenue ever for education programs, \$2000 more than any previous year. This growth comes both from an increase in the fees for outreach programs from the summer of 2023 and an increase in number of outreach programs throughout this fiscal year.

My 1st Museum Program

As part of the My 1st Museum program in partnership with the Philadelphia School District Office of Early Childhood Education, ASHM visited 5 schools with a total of 15 classrooms in Philadelphia for outreach programs and hosted field trips for three of the participating schools. About 250 total students were served by the program this year.

Summer Library Programs

Haverford College student Carina Whiting facilitated outreach programs about Vikings and Pippi Longstocking for Summer 2024. Carina presented 36 programs at libraries and rec centers in partnership with Philadelphia nonprofit CraftNow. These programs saw an attendance of nearly 1000 people, the largest ever for our summer library programs.

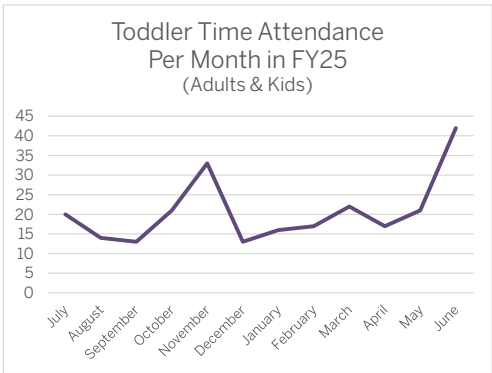
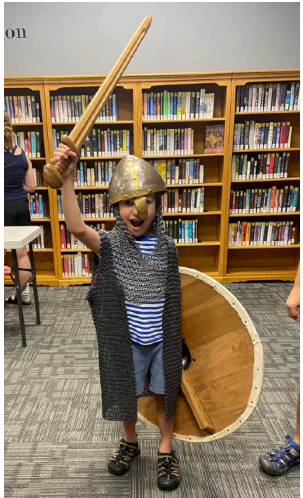
For summer 2025, ASHM Education Manager Ellie Gorman and ASHM Weekend Manager Zayne Pino are facilitating outreach programs about Scandinavian Folk Art and the Dala Horse across the tristate area.

Toddler Time

This was a great year for Toddler Time! In June, the Museum saw its highest monthly attendance for the program since 2017 and the highest total yearly attendance since FY17, with about 100 more attendants for Toddler Time in FY25 than FY24. Attendance grew or stayed consistent throughout the year, even during months that often see lower than average attendance.

FDR Park Market Outreach

In Summer 2024, ASHM conducted some outreach at the Southeast Asian and Latino markets in FDR Park. Weekend Manager Elin Carlsson was able to visit the markets three times over the summer, giving out ASHM materials and inviting market visitors to visit the Museum. ASHM also produced free guest passes for the Museum for Elin to give out to Market attendees and vendors.



EVENTS & PROGRAMS

Type: **M** = At the Museum **OS** = Off Site **V** = Virtual

Event	Type	Date
Free Second Sunday (Monthly)	M	July 2024–June 2025
Toddler Time (Monthly)	M	July 2024–June 2025
Free Craft Fair & Textile Family Day	M	July 14, 2024
Smörgåsbeer	M	July 27, 2024
Crayfish Party	M	August 16, 2024
Fall Swedish Language Classes Begin (10 weeks)	V	September 9, 2024
Annual Meeting & Candy Talk and Tasting	M	September 15, 2024
Member Chat: Meet the New Curator!	V	September 25, 2024
Exhibition Preview: <i>Sauna is Life: Sauna Culture in Finland</i>	M	October 17, 2024
Hemslöjd Craft Series: Dala Horse Painting	M	October 20, 2024
Rambo's Revival Cider Tasting & Trivia Night at ASHM	M	October 22, 2024
Rambo Cider Release & Trivia Night at Liquid Alchemy Beverages	OS	November 7, 2024
Stories & Crafts Free Family Day	M	November 10, 2024
Hemslöjd Craft Series: Embroidery for Beginners	M	November 17, 2024
Julbord Dinner	M	December 6, 2024
Lucia & Christmas Market	M	December 7-8, 2024
Craft Night Out: Straw Julbock Ornament Making	M	December 13, 2024
Spring Swedish Language Classes Begin (10 weeks)	V	January 14, 2025
New Sweden Legacy Lecture by Paul Kahan	V	January 15, 2025
ASHM Genealogy Club Meeting	M	January 25, 2025
Pea Soup Dinner	M	January 25, 2025
Virtual Field Trip Friday: Bubs Candy Factory in Sweden	V	January 31, 2025
Semlor & a Movie	M	February 8, 2025
Virtual Lunchtime Lecture: <i>Sauna is Life</i> Exhibition Tour	V	February 12, 2025
New Sweden Legacy Lecture by Jay Smith	V	February 19, 2025
ExtrABBAganza Dance Party	M	March 8, 2025
New Sweden Legacy Lecture by Evan Haefeli	V	March 19, 2025
Easter Family Day	M	April 6, 2025
Spring Ting	M	May 3, 2025
Free Community Day with SEAMAAC	M	May 11, 2025
Spring Swedish Pronunciation Language Class Begins (4 weeks)	V	May 12, 2025
Exhibit Opening: <i>Across the Atlantic: Sloopers and the First Organized Emigration from Norway to America</i>	M	May 22, 2025
Swedish National Day	M	June 6, 2025
Summer Swedish Review Language Class Begins (3 weeks)	V	June 17, 2025
Midsommarfest	M	June 21, 2025
Exhibit Opening: <i>And Let Victory Tell the Rest: 250 Years of Shipbuilding in Greater Philadelphia</i>	M	June 25, 2025
Wawa Welcomes America – Free Admission Day	M	June 29, 2025



BUILDINGS AND GROUNDS

This year we have made some significant improvements to our building and grounds. They include new plantings on the park side of the building at the sidewalk level, new carpet in the Swedenborg Room, and custom-built lockers outside the ladies' room. Essity kindly donated and installed new paper towel and soap dispensers in both restrooms. The Grand Hall has new seating furniture that was donated by Spring Ting donors! We also replaced a critical part of the HVAC system, the air separator, and replaced half of the roof on the East arcade after it was damaged by a severe storm in February.



Preparations for 2026

A planning grant from the Philadelphia Funders Collaborative for the Semiquincentennial allowed us to do some great work for our 2026 exhibitions. We hired a professional archivist, Jeffrey Cantwell, who spent 3 months looking through the ASHM institutional archives, creating finding aids, and sharing particularly interesting gems with our curatorial team for possible inclusion in the 2026 exhibition *A Century in the Making: ASHM at 100*.

On November 11 & 12 we hosted a gathering of some of the leaders of Nordic American museums and organizations where we spent many hours compiling lists of some of the most significant influences from Nordic countries on American life and culture. We ended our sessions with over 200 ideas to consider incorporating in our major exhibition on the past century of Nordic culture in America for 2026. The advisory group also had several virtual meetings to continue the planning which began in person.



2026 Exhibition Advisors

Karin Abercrombie, *Swedish American Museum, Executive Director*
Dag Blank, *Swedish Institute for North American Studies, Uppsala University*
Tova Brandt, *Museum of Danish America, Executive Director*
Tommy Flanagan, *Finlandia Foundation National, Executive Director*
Bruce Karstadt, *American Swedish Institute, President & CEO (retired)*
Abby Shaw, *ASHM Board Member and Museum Committee Chair*
Erin Stomgren, *American Swedish Institute, Director of Exhibitions*

Library Memberships

Tri-state libraries have certainly “checked out” our organizational membership passes! While libraries have historically participated in our organizational-level membership program—allowing their patrons to check out a membership card for the day—ASHM added new benefits in 2024 to attract more libraries to join as members. In addition to free admission for up to two library patron families a day, libraries can also book our outreach programs for children and for adults at a 20% discount. This provides an added bonus for libraries to engage with the Museum through education and a way for the Museum to better serve the community outside our walls. As a result of this promotion, ASHM brought at least five additional programs to libraries over the course of the year. Seventeen libraries were organizational members of the Museum this year.

MUSEUM FINANCIALS

Statements of Activities and Changes in Net Assets Years Ended June 30, 2025 and 2024

	2025			2024		
	Without Donor Restrictions	With Donor Restrictions	Total	Without Donor Restrictions	With Donor Restrictions	Total
Revenues and support:						
Contributions	\$ 300,385	\$ 5,100	\$ 305,485	\$ 316,852	\$ 75,908	\$ 392,760
Contributions - Centennial Fund	91,177	229,782	320,959	-	-	-
Contributed use of land	214,000	-	214,000	214,000	-	214,000
Fundraising event, net of cost of direct benefits to donors of \$7,125 in 2025 and \$7,885 in 2024	32,169	-	32,169	25,263	-	25,263
Membership dues	39,031	-	39,031	39,605	-	39,605
Admission	21,754	-	21,754	20,655	-	20,655
Program and event revenues	121,022	-	121,022	97,339	-	97,339
Gift shop sales	96,424	-	96,424	90,180	-	90,180
Rental income	256,364	-	256,364	225,589	-	225,589
Other	4,072	-	4,072	4,140	-	4,140
Application of spending policy	39,467	(39,467)	-	36,576	(36,576)	-
Net assets released from restriction	24,833	(24,833)	-	16,697	(16,697)	-
	1,240,698	170,582	1,411,280	1,086,896	22,635	1,109,531
Expenses:						
Program services:						
Curatorial and exhibits (including depreciation of \$59,435 and \$72,002, respectively)	449,274	-	449,274	482,299	-	482,299
Educational (including depreciation of \$35,662 and \$43,201, respectively)	346,248	-	346,248	328,662	-	328,662
Support services:						
Management and general (including depreciation of \$17,831 and \$21,600, respectively)	347,156	-	347,156	297,992	-	297,992
Development and fundraising (including depreciation of \$5,944 and \$7,200, respectively)	192,923	-	192,923	156,141	-	156,141
	1,335,601	-	1,335,601	1,265,094	-	1,265,094
Changes in net assets before other income	(94,903)	170,582	75,679	(178,198)	22,635	(155,563)
Other income:						
Insurance proceeds	48,450	-	48,450	-	-	-
Investment return, net	146,718	93,739	240,457	166,879	107,858	274,737
	195,168	93,739	288,907	166,879	107,858	274,737
Changes in net assets	100,265	264,321	364,586	(11,319)	130,493	119,174
Net assets, beginning of year	2,292,041	911,117	3,203,158	2,303,360	780,624	3,083,984
Net assets, end of year	\$ 2,392,306	\$ 1,175,438	\$ 3,567,744	\$ 2,292,041	\$ 911,117	\$ 3,203,158

BOARD OF GOVERNORS

Erik Muther, *Chair*
Anna-Lena Bromberg, *Vice Chair*
Abby Shaw, *Vice Chair*
Julie Johnson, *Secretary*
James Walker, *Treasurer*
Tracey Beck, *Executive Director*
Karin Bergqvist
Elisabeth Brown
Greg Brown
Bill Eaton
Jorgen Flood
John Foster
Dawn Gould
Roberta Johnson
Marja Kaisla
Dee Kaplan
Monica Kruse

Matthew Lund
Anna Maripuu
Kristina O'Doherty
Carl Rapp
Susan Ryszka
Susan Satkowski
Jim Walker
Ulf Åkerblom

Ex-Officio Governors

The Honorable Cherelle L. Parker,
Mayor of Philadelphia

Aparna Palatino, *Deputy
Commissioner of Capital
Infrastructure & Natural Lands
Management, City of Philadelphia*



Board Chair Erik Muther at the
2025 Spring Ting Dinner

2024 Amandus Johnson Award Winner

Leonard Busby was honored at the 2024 Annual Meeting with the Amandus Johnson Service Award. Leonard and his family became involved at the museum when his daughter was seven years old and her best friend enlisted her to be a folk dancer in the Lucia program. From there, he was recruited by his friend Bob Savage to join the Board and the Men's Pea Soup Committee, with the vital role of making the soup! Leonard has continued to make the soup for over a decade now.

In addition, as a lawyer who served six years on the Board of Governors, it may not come as a surprise that Leonard has provided years of pro bono legal advice about matters from personnel issues to copyright and has reviewed many contracts for Museum staff. One of the things he is most proud of is his work on the first contract with Jeffrey Miller Catering, which has benefited the Museum for the last 11 years!



Ebba Sparre Outdoor Saunas

The Ebba Sparre Sauna Collective from urban design and development collective Scout opened at ASHM just before Christmas and ran through March in conjunction with *Sauna is Life: Sauna Culture in Finland*. Set up on the Museum's Terrace, the experience featured three barrel saunas each for up to four guests with options to book for 30-90 minutes. Heavily featured in local news outlets, the Ebba Sparre Sauna brought a lot of new interest—and new visitors—to the Museum. We had 1364 visitors in our building for the saunas, with many visitors arriving early before or staying late after their time slot to tour the Museum and the *Sauna is Life* exhibit.



COMMITTEE MEMBERS & CLUB OFFICIALS

Board Committees

Buildings & Grounds Committee

Al Wulff, *Chair until 6/4/2025*
Dee Kaplan, *Chair after 6/4/2025*
Erwin Apell
Per Blomquist
Greg Brown
Fred Hagan
Matt Lund
Ed Root
Frank Sanders
Theresa Stuhlman
Jim Walker
Fanny Warren

Compensation Committee

Monica Kruse, *Chair*
Greg Brown
Anna Maripuu
Susan Ryszka
Susan Satkowski

Development Committee

Greg Brown, *Chair*
Aja Beech (beginning April)
Julie Johnson
Ruth Lindeborg
Al Louer
Sandra Pfaff
Kristina O'Doherty

Finance & Audit Committee

Sue Ryszka, *Chair*
Bill Eaton, *Vice Chair*
Olof Bergqvist
Greg Brown
John Foster
Matt Lund
Sandra Pfaff
Mary Wagner
Jim Walker

Museum Committee

Abby Shaw, *Chair*
Justina Barrett
Anna-Lena Bromberg
Wendy Cooper
Olivia Henley
Marja Kaisla
Brett Peters
Jennifer Zwilling

Nominating Committee

Susan Satkowski, *Chair*
Anna-Lena Bromberg
Bill Eaton
Roberta Johnson
Monica Kruse
Anna Maripuu
Kristina O'Doherty
Carl Rapp

Strategic Planning

Karin Bergqvist, *Chair*
Anna-Lena Bromberg
Lauren Burnham
Jorgen Flood
Ellie Gorman
Julie Johnson
Marja Kaisla
Dee Kaplan
Monica Kruse
Anna Maripuu
Erik Muther
Brett Peters
Sandra Pfaff
Carl Rapp
Sue Ryszka
Frank Sanders
Susan Satkowski
Abby Shaw
Jim Walker
Al Wulff
Ulf Åkerblom

Erik Muther, *Chair*, and Tracey Beck, *Executive Director*, are ex-officio members of all board committees.

Event Committees

Pea Soup Committee

Leonard Busby
Lauren Burnham
Dawn Gould
Michael Harrar
Erik Heinicke
Roman Hyrcushko
Lars Jönsson
Ronan Jönsson
Glenn Kasper
Edward Keer
Frank Sanders

SmörgåsBeer 2024

Kristin Pickell, *Chair*
Lauren Burnham
Elin Carlsson
Amelia Domby
Dawn Gould

Spring Ting Committee

Monica Kruse, *Chair*
Tracey Beck
Anna-Lena Bromberg
Jessica Coombs
Amelia Domby
Monica Edqvist-Johansson
Susan Ethridge
Ellie Gorman
Julie Haveri
Elin Jeantet
Anna Maripuu
Mary Anne Carlson Morgan
Kristina O'Doherty
Sandra Pfaff
Nancy Tuttle
Fanny Warren

Clubs

Auxiliary Board

Dawn Gould, *President*
Linda Alexy, *Treasurer*
Kristina Kalb, *Secretary*
Ken Alexy
Elisabeth Brown
Allison Clausen
Carol Duncan
Kay Ford
Elin Gavaghan
Karin Hampel
Kristina Jansson
LaVonne Johnson
Kristina Kalb
Karin Kornaga
Donna O'Connell
Kristina O'Doherty
Birgitta Paddack
Cindy Parker
Sandra Pfaff
Donna Popp
Mary Anne Powell
Ingrid Rosenback
Debbie Soukup
Susan Sjöström
Agnetha Thompson
Fanny Warren

Genealogy Club Officers

Kristina O'Doherty, *President*
LaVonne Johnson, *Vice President*
Tod Benedict, *Secretary/Treasurer*

Midsommarklubben

Elisabeth Brown, *President*
Görel Bengtzon, *Vice President*
Ingrid Cagan, *Treasurer*
Kristina Antoniadis
Tina Cook
Catharina Copeland
Birgitta Davis
Maud Forsberg Davis
Ulla Heinicke
Kerstin Hoeldtke
Elisabeth Hohman
Karin Kornaga
Maj Britt Lautman
Gullbritt Mengelbier
Gun-Marie Nalsen
Barbro Pollock
Kjerstin Sama
Annika Saracini
Inger Stone
Agneta Thompson
Eva Wattenmaker
Kjerstin Wellings
Birgitta Wilson

MEMBERS, DONORS & GIFTS IN-KIND

The generosity of our community of supporters is vital in our ability to carry out our mission. The following individuals, foundations, organizations, and corporations have given us gifts, services, and grants to support our operating needs, endowment, events, and special projects above and beyond basic membership dues.

\$100,00+

Anonymous

\$10,000–\$99,999

ASHM Auxiliary
Barbro Osher Pro Suecia Foundation
Gregory Brown & Linton Stables
John & Carin Foster
Midsommarklubben
McLean Contributionship
Erik & Nicole Muther
Philadelphia Cultural Fund
Philadelphia Funders Collaborative for the
Semiquincentennial
Carl D. Rapp
Red Moose Charitable Trust

\$5,000–\$9,999

Anonymous
Tracey & William Beck
Elisabeth Brown
Ulla Dagert-Muther & Paul Muther
Martha Clark Goss
A. Monica Kruse
Pennsylvania Historical & Museum
Commission
Rosenlund Family Foundation

\$1,000–\$4,999

Anonymous
Olof Bergqvist
Karin Bergqvist
Capozzi Scaramuzza Foundation
A.R. Cohen
Margaret Copeland
Gordon & Jane Downing
Kay Ford
Kristina Hofmann
Julie Johnson
Kristina & Charles Kalb
Dee Kaplan
Ulla Martz
George & Esther Ann McFarland Foundation
Minneapolis Foundation
Mary McCoy
Nord Cascading Unitrust Fund
Sandra Pfaff
Wade Sjogren
Susan Sjostrom
Wendel Swan
Sons of Norway Foundation
SWEA New Jersey
SWEA Philadelphia
Cynthia & James Traverso
James & Sofia Walker
Fanny Warren
Eunice Winters
Henrietta Tower Wurts Memorial Fund

\$500–\$999

Anonymous
Anna-Lena Bromberg
Ingrid Cagan

Emily Christiansen
John William Dickey
William Honig
Tom Hooper
Juliene Lindberg
Ruth Lindeborg & Leonard Busby
Matthew Lund
Kristina & John O'Doherty
Lindsey Scannapieco
Abby Shaw
Margaretha Talerma

\$250–\$499

Ulla-Britt & Erwin Apell
Per Blomquist
Independence Blue Cross Corporate Match
Lynn Brogren
Julie Jensen Bryan
Alice V. Christensen
Margaret Churchville
Jens & Allison Clausen
William Clemens
Jerome Cloud
Hilma Cooper
Claudia Curtis
Jill M. D'Andrea
Jorgen Flood
Dawn Gould
Thomas & Mary Ann Hudson
IK Start USA
Karin Kornaga
Roger Loughney
Mary Anne Carlson Morgan
Deena & Brian O'Neil
Elsa Orescan
Allyson Patterson
Herbert & Zofia Rambo
Sons of Norway Restauration Lodge 3-555
Kristina H. Smith
Swedish Cultural Society of Cleveland
Karl Swedberg
Julie Tobias
Jeanette Turnbull
Kim-Eric Williams

\$100–\$249

Lars Ahlman
Suzanne Badalamenti
Florence Beck
Deborah Belusa
Sandra Brown
Donna Cashdollar
Sarah Chang
Sara Davis
Michael Desalvo
Chris Erikson
Margaret M. Friel
Ann Gilje
Kathleen & Barry Grahm
Lennart A. Hahr
Patricia Hall
Emma Hansson
Samuel W. Heed

James Hill
Ian Hincken
Elisabeth & Bill Hohman
Ralph Holmberg
Kathi & Richard Keefe
Sandy Kling
Robin Lapre
William Lawson
Mia Lehmann
Helen Ljungdahl Round
Mark Lundgren
Norman Marcus
Marlin R. Mattson
Harry Mazurek
Karen McKillip
Mark & Anyce Miles
Janet Nelson
Margot Patterson
John Peterson
Christine Piper
Barbro Pollock
Nancy Pontes
Ian Samways
Paul Schmidt
David & Mary Segermark
Shirley Stengel
Ann Charlotte Storer
John Thorell
Jeanette Turnbull
Gretchen & Luke Walker
Britt Winte
Inger Zeller

Under \$100

Görel Bengtzon & Roman Hrycushko
Richard Kiger
Carl-Erik Sundberg
John Antoniadis
Helene Basile
Joy Becker
Ronald Bourque
Damian Brindell
Jeanne Cavuto
Brian Clancy
Emelie & Christophe Collet
St. Gabriel's Episcopal Church
Robert Fedick
Ralph Holmberg
Alice Hurwitz
Roberta & Gudmund Iversen
Margaretha Joelsson
Jim Kenney
Eivor Lazaar
Three Crowns Lodge #704
Rosemary and Jeffery Moller
Alfred J. Nicolosi
Donna E. O'Connell
Janet Olson
Barbro S. Osher
Birgitta Paddack
Maud Palmer
Anna-Stina Payne
Georgiana Peacher

Carolyn Peterson
Herbert Peterson
Kerstin Radel
Hope Ryden
Kjerstin & Dominic Sama
Diane Sandvik
Annika Saracini
Karl E. Schober
Ulla Britt Olows Schroyer
Diane Schueler
Katarina Sheronas
Kristina H. Smith
Deborah P. Soukup
Inger Stone
Stephan Thilen
William & Alison Thompson
Linda Mattson Thurstlic
Nancy Tuttle
Gunilla Wannstedt
Kjerstin Wellings
Carol S. Choclos
Kristen Widham
Caroline Brady
Rae Ellen Hinken
Selma Olson Tepper
Juliet & Kurt Wunsch
Old Swedes Historical Foundation
Benjamin Jacobs
Mary Sampson
Martha Streed

Life Members

Anonymous
Margaret Anderson
Kristina Antoniadis
Karin Bergqvist
Olof Bergqvist
Amelie Marie Bonde
Helena Elisabeth Bonde
Clarissa Bonde
Sophia Louise Bonde
W. Keen Butcher
Jens & Allison Clausen
Margaret Copeland
Ulla Dagert-Muther
Sylvia Davenport
Ruth Ekstrom
Jan & Lillemor Essunger
Margaret Finley
Kay Ford
Richard Groos
Elly Gustafsson
Ingrid & David Hang
Samuel W. Heed
Douglas Hellstrom
John H. Hill
Robert N. Hill
Kristina and Charles Kalb
Joseph Kohn
A. Monica Kruse
Marcia Larson
Mia Lehmann
Ulla Martz
Britta Mattson
Ellen P. Morris
Erik & Nicole Muther
Eric Neilson
Barbro S. Osher
Georgiana Peacher
Herbert Peterson
Sandra Pfaff

Jean & Stephanie Rosenlund-Shim
Karl E. Schober
Earl & Sylvia Seppala
Wade Sjogren
Pamela Sjogren
Margaretha Talerman
Ruth Taylor
Fanny Warren
Kim-Eric Williams

Gifts in Kind

1812 Productions
Ross A. Albergo
Antica Restaurant
Erwin & Ulla-Britt Apell
Artifice Ales & Mead
ASHM Auxiliary
ASHM Board
The Athenaeum of Philadelphia
Avalon Golf Club
B Devoted Boutique
Bala Consulting Engineers
Baltic Leisure
Bark Box
Bill & Tracey Beck
Karin Bergqvist
Beyond the Bell Tours
Bjork Café & Bistro
Anna-Lena Bromberg
Elisabeth Brown
Ragna Brown
Bryn Mawr Film Institute
Buckley's Tavern
Erik Burro
Chanticleer Gardens
Cirillo Institute
Claudia Curtis
Ulla Dagert-Muther & Paul Muther
Dansko
Birgitta & Morris Davis
Delphia Designs
Di Fabio's Restaurant
Double Tree by Hilton Philadelphia Airport
Eastern State Penitentiary
Bill Eaton
Monica Edqvist-Johansson
Einstök Brewing Company
Kirstyn Engler
Englund's Quality Clothiers
Essity
Dorothy Evans
FishtownStitch
Karen Flam
Maud Forsberg-Davis
Frazer Antiques
Margaret Friel
General Warren
Kathy Z. Gillis
Hartwell Longdrink
Hassis Men's Apparel
Haus of Paws
Hedgerow Theater
Heirloom Doylestown
Historical Society of Pennsylvania
Human Robot
Jasper Shore Jewelers
Jasper's Backyard
Elin Jeantet
Jeffrey A. Miller Hospitality Group
Marja Kaisla
Kalmar Nyckel Foundation

Kathi Keefe
Kenwood Original Beer
Marcella Kraus
Monica Kruse
La Locanda Restaurant & Bar
Liquid Alchemy Beverages
The Little House Shop
Longwood Gardens
Lore's Chocolate
John Eric Lundin
Mark Cordes and Sons Landscape
Design Company LLC
Meduseld Meadery
Mercer Museum & Fonthill Castle
Midsommarklubben
Milk Jawn
Moravian Tile Works
Mary Anne Carlson Morgan
AnnMarie Murray LLC
Erik Muther
Nina's Waffles
Kristina O'Doherty
Sandra Pfaff
Philadelphia Eagles
Philadelphia Museum of Art
Philadelphia Phillies
Philadelphia Pretzel Factory
Philadelphia Visitor Center
Pickells and Posies
Pop's Water Ice
Quintessence Theatre
Linda Raffa
Rare Forms Philly
Reading Terminal Market
Rekoderlig Cider
SAC Design
Salon 27
Abby Shaw
Simply 2 Cute 4 Kids
Sjöblom Winery
Skanska
STAVRA Fine Art Portraits
Kyle Sullivan
Swedish Colonial Society
Sweetish Candy
Total Wine and Spirits
The Union League of Philadelphia
Michele Uram
Linda Vizi
Jim Walker
Fanny Warren
Waters Edge Winery + Bistro
Wild Birds Unlimited
Kim-Eric Williams
Winterthur Museum, Garden & Library
World Cafe Live
Al Wulff
Yards Brewing Company
Zahav

We appreciate the generosity demonstrated by those on the preceding lists and have made every effort to ensure accuracy. Please contact Tracey Beck, Executive Director, if you discover an error.

ASHM STAFF

Tracey Rae Beck, *Executive Director*

Aja Beech, *Development Manager*
(beginning April 2025)

John Bowman, *Weekend Manager*
(beginning April 2025)

Lauren Burnham, *Assistant Director*

Jeffrey Cantwell, *Project Archivist*
(through August 2024)

Elin Carlsson, *Weekend Manager*

Nancy Lee Cesario, *Visitor Services and
Retail Manager*

Amelia Domby, *Marketing Assistant*

Ellie Gorman, *Education and Public Relations
Manager*

Claire Guenzer, *Weekend Manager*
(beginning April 2025)

Olivia Henley, *Curatorial and
Museum Assistant*

Sarah Henry, *Weekend Manager*
(through March 2025)

Brett Peters, *Curator*
(beginning August 2024)

Zayne Pino, *Weekend Manager*

Frank Sanders, *Facility and Event Manager*

Roger Walsh, *Weekend Manager*
(through January 2025)

Carina Whiting, *Education Outreach Intern*
(through August 2024)



AMERICAN SWEDISH
HISTORICAL MUSEUM

1900 Pattison Ave. Philadelphia, PA 19145

215.389.1776 | www.americanswedish.org

[f](#) [i](#) [@americanswedish](#)